

Datasheet for ABIN7247633

**anti-PPM1M antibody****2** Images[Go to Product page](#)

## Overview

Quantity:	200 µL
Target:	PPM1M
Reactivity:	Human, Mouse
Host:	Rabbit
Clonality:	Polyclonal
Conjugate:	This PPM1M antibody is un-conjugated
Application:	ELISA, Immunohistochemistry (IHC)

## Product Details

Immunogen:	Fusion protein of human PPM1M
Isotype:	IgG
Characteristics:	Polyclonal Antibody
Purification:	Antigen affinity purification

## Target Details

Target:	PPM1M
Alternative Name:	PPM1M ( <a href="#">PPM1M Products</a> )
Background:	PPM1M is a member of the PP2C family of Ser/Thr protein phosphatases. PP2C family members are known to be negative regulators of cell stress response pathways. This phosphatase was identified as an interacting protein of Rho guanine nucleotide exchange factors (PIX). PIX proteins are regulators of p21/Cdc42/Rac1-activated kinase 1 (PAK1), a

## Target Details

protein kinase mediating biological effects downstream of Rho GTPases. This phosphatase has been shown to block the effects of PAK, and thus inhibit actin stress fiber breakdown and morphological changes driven by cell division cycle 42 (CDC42).

UniProt: [Q96MI6](#)

## Application Details

Application Notes: IHC 1:100-1:300, ELISA 1:5000-1:10000

Restrictions: For Research Use only

## Handling

Format: Liquid

Concentration: 1.74 mg/mL

Buffer: PBS with 0.05 % Sodium azide and 40 % Glycerol, pH 7.4

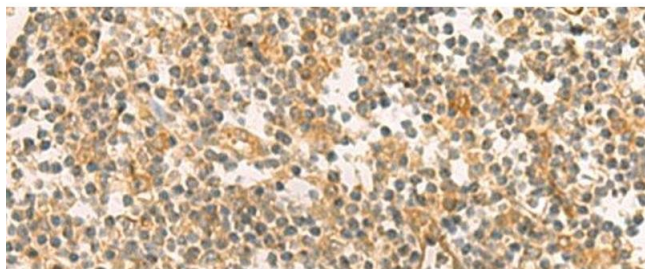
Preservative: Sodium azide

Precaution of Use: This product contains Sodium azide: a POISONOUS AND HAZARDOUS SUBSTANCE which should be handled by trained staff only.

Storage: -20 °C

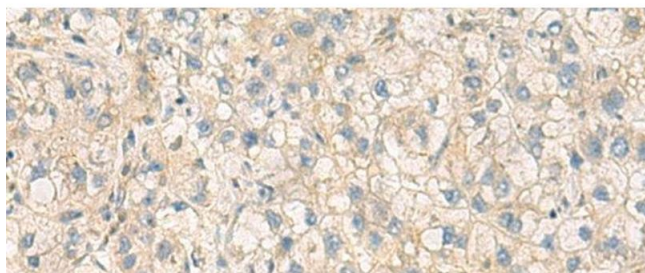
Storage Comment: Store at -20°C. Avoid freeze / thaw cycles.

## Images



### Immunohistochemistry (Paraffin-embedded Sections)

**Image 1.** Immunohistochemistry of paraffin-embedded Human tonsil tissue using PPM1M Polyclonal Antibody at dilution of 1:100(x200)



#### Immunohistochemistry (Paraffin-embedded Sections)

**Image 2.** Immunohistochemistry of paraffin-embedded Human liver cancer tissue using PPM1M Polyclonal Antibody at dilution of 1:100(x200)