

Datasheet for ABIN7247663

**anti-DREAM antibody**[Go to Product page](#)**1** Image

## Overview

Quantity:	200 µL
Target:	DREAM (KCNIP3)
Reactivity:	Human, Mouse, Rat
Host:	Rabbit
Clonality:	Polyclonal
Conjugate:	This DREAM antibody is un-conjugated
Application:	ELISA, Immunohistochemistry (IHC)

## Product Details

Immunogen:	Fusion protein of human KCNIP3
Isotype:	IgG
Characteristics:	Polyclonal Antibody
Purification:	Antigen affinity purification

## Target Details

Target:	DREAM (KCNIP3)
Alternative Name:	KCNIP3 ( <a href="#">KCNIP3 Products</a> )
Background:	This gene encodes a member of the family of voltage-gated potassium (Kv) channel-interacting proteins, which belong to the recoverin branch of the EF-hand superfamily. Members of this family are small calcium binding proteins containing EF-hand-like domains. They are integral subunit components of native Kv4 channel complexes that may regulate A-type currents, and

## Target Details

hence neuronal excitability, in response to changes in intracellular calcium. The encoded protein also functions as a calcium-regulated transcriptional repressor, and interacts with presenilins. Alternatively spliced transcript variants encoding different isoforms have been described. KCNIP3 (Potassium Voltage-Gated Channel Interacting Protein 3) is a Protein Coding gene. Diseases associated with KCNIP3 include Alzheimer Disease. Among its related pathways are Cardiac conduction and Development Ligand-independent activation of ESR1 and ESR2. GO annotations related to this gene include calcium ion binding and transcription corepressor activity. An important paralog of this gene is KCNIP4.

UniProt: [Q9Y2W7](#)

## Application Details

Application Notes: IHC 1:50-1:100, ELISA 1:5000-1:10000

Restrictions: For Research Use only

## Handling

Format: Liquid

Concentration: 1.62 mg/mL

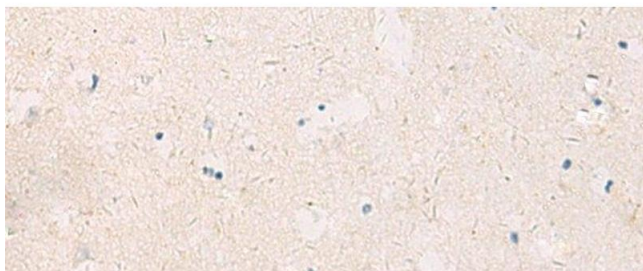
Buffer: PBS with 0.05 % Sodium azide and 40 % Glycerol, pH 7.4

Preservative: Sodium azide

Precaution of Use: This product contains Sodium azide: a POISONOUS AND HAZARDOUS SUBSTANCE which should be handled by trained staff only.

Storage: -20 °C

Storage Comment: Store at -20°C. Avoid freeze / thaw cycles.



#### Immunohistochemistry (Paraffin-embedded Sections)

**Image 1.** Immunohistochemistry of paraffin-embedded Human brain tissue using KCNIP3 Polyclonal Antibody at dilution of 1:90(x200)