



[Go to Product page](#)

Datasheet for ABIN7247672

## anti-KRCC1 antibody

### 2 Images

#### Overview

Quantity:	200 µL
Target:	KRCC1
Reactivity:	Human, Mouse
Host:	Rabbit
Clonality:	Polyclonal
Conjugate:	This KRCC1 antibody is un-conjugated
Application:	ELISA, Western Blotting (WB), Immunohistochemistry (IHC)

#### Product Details

Immunogen:	Fusion protein of human KRCC1
Isotype:	IgG
Characteristics:	Polyclonal Antibody
Purification:	Antigen affinity purification

#### Target Details

Target:	KRCC1
Alternative Name:	KRCC1 ( <a href="#">KRCC1 Products</a> )
Background:	KRCC1 (lysine-rich coiled-coil 1), also known as CHBP2 (cryptogenic hepatitis-binding protein 2), is a 259 amino acid protein that is encoded by a gene located on human chromosome 2p11.2. Consisting of 237 million bases, chromosome 2 is the second largest human chromosome and encodes over 1,400 genes. A number of genetic diseases are linked to genes

## Target Details

---

on chromosome 2. Harlequin ichthyosis, a rare and morbid skin deformity, is associated with mutations in the ABCA12 gene. The lipid metabolic disorder sitosterolemia is associated with ABCG5 and ABCG8. An extremely rare recessive genetic disorder, Alström syndrome, is due to mutations in the ALMS1 gene. Interestingly, chromosome 2 contains what appears to be a vestigial second centromere and vestigial telomeres which gives credence to the hypothesis that human chromosome 2 is the result of an ancient fusion of two ancestral chromosomes seen in modern form today in apes.

---

Molecular Weight: Observed\_MW: Refer to figures  
Calculated\_MW: 31 kDa

---

UniProt: [Q9NPI7](#)

## Application Details

---

Application Notes: WB 1:500-1:2000, IHC 1:100-1:300, ELISA 1:5000-1:10000

---

Restrictions: For Research Use only

## Handling

---

Format: Liquid

---

Concentration: 1.68 mg/mL

---

Buffer: PBS with 0.05 % Sodium azide and 40 % Glycerol, pH 7.4

---

Preservative: Sodium azide

---

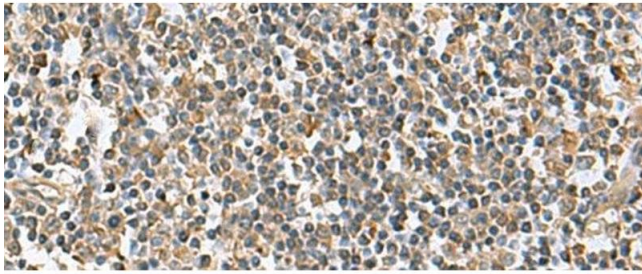
Precaution of Use: This product contains Sodium azide: a POISONOUS AND HAZARDOUS SUBSTANCE which should be handled by trained staff only.

---

Storage: -20 °C

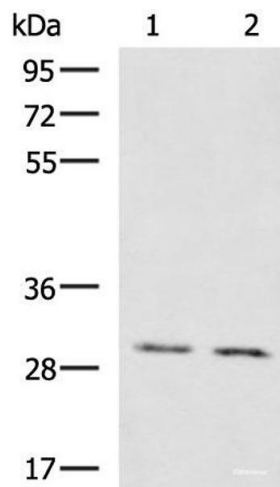
---

Storage Comment: Store at -20°C. Avoid freeze / thaw cycles.



### Immunohistochemistry (Paraffin-embedded Sections)

**Image 1.** Immunohistochemistry of paraffin-embedded Human tonsil tissue using KRCC1 Polyclonal Antibody at dilution of 1:95(x200)



### Western Blotting

**Image 2.** Western blot analysis of Mouse brain tissue Mouse kidney tissue lysates using KRCC1 Polyclonal Antibody at dilution of 1:1350