



[Go to Product page](#)

Datasheet for ABIN7247717
anti-HORMAD2 antibody

2 Images

Overview

Quantity:	200 µL
Target:	HORMAD2
Reactivity:	Human
Host:	Rabbit
Clonality:	Polyclonal
Conjugate:	This HORMAD2 antibody is un-conjugated
Application:	ELISA, Immunohistochemistry (IHC)

Product Details

Immunogen:	Fusion protein of human HORMAD2
Isotype:	IgG
Characteristics:	Polyclonal Antibody
Purification:	Antigen affinity purification

Target Details

Target:	HORMAD2
Alternative Name:	HORMAD2 (HORMAD2 Products)
Background:	Essential for synapsis surveillance during meiotic prophase via the recruitment of ATR activity. Plays a key role in the male mid-pachytene checkpoint and the female meiotic prophase checkpoint: required for efficient build-up of ATR activity on unsynapsed chromosome regions, a process believed to form the basis of meiotic silencing of unsynapsed chromatin (MSUC) and

Target Details

meiotic prophase quality control in both sexes. Required for the DNA double-strand break-independent, BRCA1-dependent activation of ATR on the sex chromosomes that is essential for normal sex body formation (By similarity).

UniProt: [Q8N7B1](#)

Application Details

Application Notes: IHC 1:50-1:200, ELISA 1:5000-1:10000

Restrictions: For Research Use only

Handling

Format: Liquid

Concentration: 1.32 mg/mL

Buffer: PBS with 0.05 % Sodium azide and 40 % Glycerol, pH 7.4

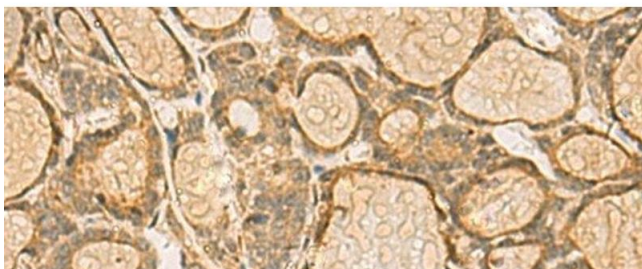
Preservative: Sodium azide

Precaution of Use: This product contains Sodium azide: a POISONOUS AND HAZARDOUS SUBSTANCE which should be handled by trained staff only.

Storage: -20 °C

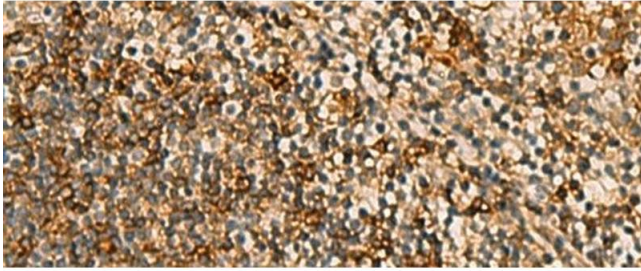
Storage Comment: Store at -20°C. Avoid freeze / thaw cycles.

Images



Immunohistochemistry (Paraffin-embedded Sections)

Image 1. Immunohistochemistry of paraffin-embedded Human thyroid cancer tissue using HORMAD2 Polyclonal Antibody at dilution of 1:45(x200)



Immunohistochemistry (Paraffin-embedded Sections)

Image 2. Immunohistochemistry of paraffin-embedded Human tonsil tissue using HORMAD2 Polyclonal Antibody at dilution of 1:45(x200)