

Datasheet for ABIN7247765

**anti-SSH3 antibody****2** Images[Go to Product page](#)

## Overview

Quantity:	200 µL
Target:	SSH3
Reactivity:	Human
Host:	Rabbit
Clonality:	Polyclonal
Conjugate:	This SSH3 antibody is un-conjugated
Application:	ELISA, Immunohistochemistry (IHC)

## Product Details

Immunogen:	Fusion protein of human SSH3
Isotype:	IgG
Characteristics:	Polyclonal Antibody
Purification:	Antigen affinity purification

## Target Details

Target:	SSH3
Alternative Name:	SSH3 ( <a href="#">SSH3 Products</a> )
Background:	The ADF (actin-depolymerizing factor)/cofilin family (see MIM 601442) is composed of stimulus-responsive mediators of actin dynamics. ADF/cofilin proteins are inactivated by kinases such as LIM domain kinase-1 (LIMK1, MIM 601329). The SSH family appears to play a role in actin dynamics by reactivating ADF/cofilin proteins in vivo.SSH3 (Slingshot Protein

## Target Details

Phosphatase 3) is a Protein Coding gene. Among its related pathways are Regulation of actin cytoskeleton and Cytoskeletal Signaling. GO annotations related to this gene include actin binding and protein tyrosine phosphatase activity. An important paralog of this gene is SSH1.

UniProt: [Q8TE77](#)

## Application Details

Application Notes: IHC 1:50-1:200, ELISA 1:5000-1:10000

Restrictions: For Research Use only

## Handling

Format: Liquid

Concentration: 1.02 mg/mL

Buffer: PBS with 0.05 % Sodium azide and 40 % Glycerol, pH 7.4

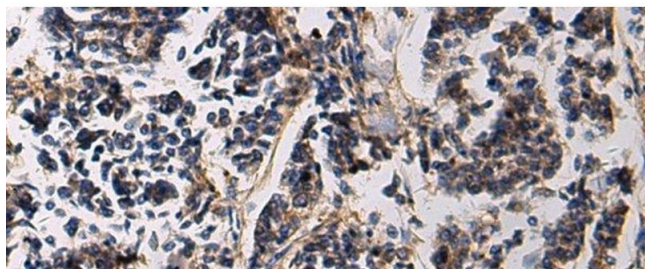
Preservative: Sodium azide

Precaution of Use: This product contains Sodium azide: a POISONOUS AND HAZARDOUS SUBSTANCE which should be handled by trained staff only.

Storage: -20 °C

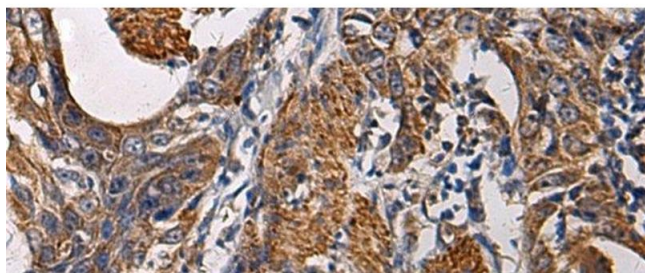
Storage Comment: Store at -20°C. Avoid freeze / thaw cycles.

## Images



### Immunohistochemistry (Paraffin-embedded Sections)

**Image 1.** Immunohistochemistry of paraffin-embedded Human breast cancer tissue using SSH3 Polyclonal Antibody at dilution of 1:60(x200)



#### Immunohistochemistry (Paraffin-embedded Sections)

**Image 2.** Immunohistochemistry of paraffin-embedded Human esophagus cancer tissue using SSH3 Polyclonal Antibody at dilution of 1:60(x200)