



[Go to Product page](#)

Datasheet for ABIN7247789

anti-ENKD1 antibody

2 Images

Overview

Quantity:	200 µL
Target:	ENKD1
Reactivity:	Human, Mouse
Host:	Rabbit
Clonality:	Polyclonal
Conjugate:	This ENKD1 antibody is un-conjugated
Application:	ELISA, Western Blotting (WB), Immunohistochemistry (IHC)

Product Details

Immunogen:	Fusion protein of human ENKD1
Isotype:	IgG
Characteristics:	Polyclonal Antibody
Purification:	Antigen affinity purification

Target Details

Target:	ENKD1
Alternative Name:	ENKD1 (ENKD1 Products)
Background:	The exact function of ENKD1 remains unknown.
Molecular Weight:	Observed_MW: Refer to figures Calculated_MW: 39 kDa

Target Details

UniProt: [Q9H0I2](#)

Application Details

Application Notes: WB 1:500-1:2000, IHC 1:50-1:200, ELISA 1:5000-1:10000

Restrictions: For Research Use only

Handling

Format: Liquid

Concentration: 1.44 mg/mL

Buffer: PBS with 0.05 % Sodium azide and 40 % Glycerol, pH 7.4

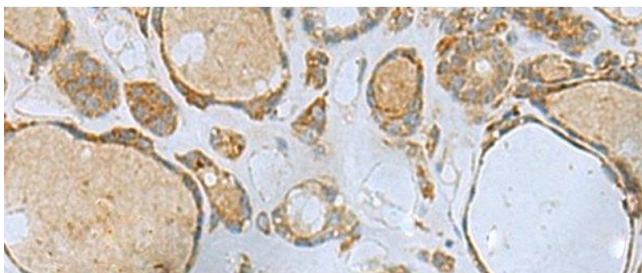
Preservative: Sodium azide

Precaution of Use: This product contains Sodium azide: a POISONOUS AND HAZARDOUS SUBSTANCE which should be handled by trained staff only.

Storage: -20 °C

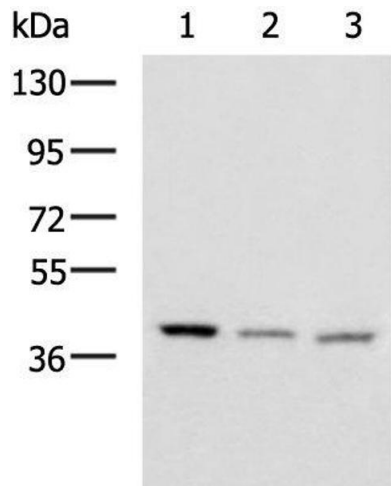
Storage Comment: Store at -20°C. Avoid freeze / thaw cycles.

Images



Immunohistochemistry (Paraffin-embedded Sections)

Image 1. Immunohistochemistry of paraffin-embedded Human thyroid cancer tissue using ENKD1 Polyclonal Antibody at dilution of 1:80(x200)



Western Blotting

Image 2. Western blot analysis of Human cerebrum tissue Human cerebella tissue Mouse brain tissue lysates using ENKD1 Polyclonal Antibody at dilution of 1:1150