



[Go to Product page](#)

Datasheet for ABIN7247822
anti-SLC35F6 antibody

2 Images

Overview

| | |
|--------------|--|
| Quantity: | 200 µL |
| Target: | SLC35F6 |
| Reactivity: | Human, Mouse, Rat |
| Host: | Rabbit |
| Clonality: | Polyclonal |
| Conjugate: | This SLC35F6 antibody is un-conjugated |
| Application: | ELISA, Immunohistochemistry (IHC) |

Product Details

| | |
|------------------|---------------------------------|
| Immunogen: | Fusion protein of human SLC35F6 |
| Isotype: | IgG |
| Characteristics: | Polyclonal Antibody |
| Purification: | Antigen affinity purification |

Target Details

| | |
|-------------------|--|
| Target: | SLC35F6 |
| Alternative Name: | SLC35F6 (SLC35F6 Products) |
| Background: | Involved in the maintenance of mitochondrial membrane potential in pancreatic ductal adenocarcinoma (PDAC) cells. Promotes pancreatic ductal adenocarcinoma (PDAC) cell growth. May play a role as a nucleotide-sugar transporter. |

Target Details

UniProt: [Q8N357](#)

Application Details

Application Notes: IHC 1:100-1:300, ELISA 1:5000-1:10000

Restrictions: For Research Use only

Handling

Format: Liquid

Concentration: 0.78 mg/mL

Buffer: PBS with 0.05 % Sodium azide and 40 % Glycerol, pH 7.4

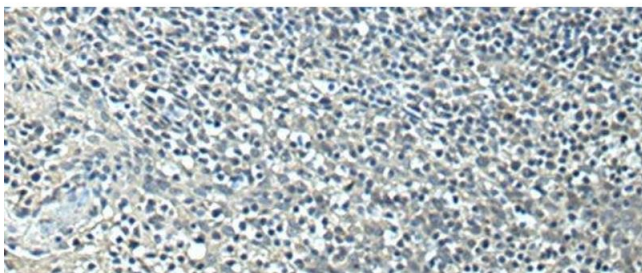
Preservative: Sodium azide

Precaution of Use: This product contains Sodium azide: a POISONOUS AND HAZARDOUS SUBSTANCE which should be handled by trained staff only.

Storage: -20 °C

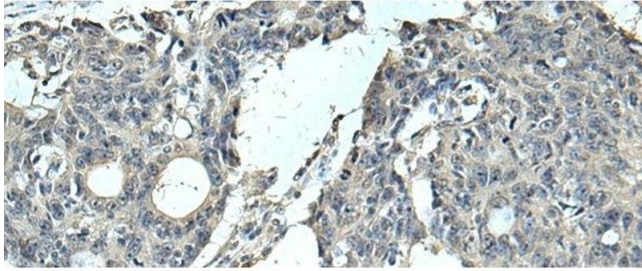
Storage Comment: Store at -20°C. Avoid freeze / thaw cycles.

Images



Immunohistochemistry (Paraffin-embedded Sections)

Image 1. Immunohistochemistry of paraffin-embedded Human tonsil tissue using SLC35F6 Polyclonal Antibody at dilution of 1:95(x200)



Immunohistochemistry (Paraffin-embedded Sections)

Image 2. Immunohistochemistry of paraffin-embedded Human colorectal cancer tissue using SLC35F6 Polyclonal Antibody at dilution of 1:95(x200)