

Datasheet for ABIN7247828

**anti-ARPC1B antibody**[Go to Product page](#)**2** Images

## Overview

Quantity:	200 µL
Target:	ARPC1B
Reactivity:	Human, Mouse, Rat
Host:	Rabbit
Clonality:	Polyclonal
Conjugate:	This ARPC1B antibody is un-conjugated
Application:	Western Blotting (WB), ELISA, Immunohistochemistry (IHC)

## Product Details

Immunogen:	Fusion protein of human ARPC1B
Isotype:	IgG
Characteristics:	Polyclonal Antibody
Purification:	Antigen affinity purification

## Target Details

Target:	ARPC1B
Alternative Name:	ARPC1B ( <a href="#">ARPC1B Products</a> )
Background:	This gene encodes one of seven subunits of the human Arp2/3 protein complex. This subunit is a member of the SOP2 family of proteins and is most similar to the protein encoded by gene ARPC1A. The similarity between these two proteins suggests that they both may function as p41 subunit of the human Arp2/3 complex that has been implicated in the control of actin

## Target Details

polymerization in cells. It is possible that the p41 subunit is involved in assembling and maintaining the structure of the Arp2/3 complex. Multiple versions of the p41 subunit may adapt the functions of the complex to different cell types or developmental stages. This protein also has a role in centrosomal homeostasis by being an activator and substrate of the Aurora A kinase.

Molecular Weight: Observed\_MW: Refer to figures  
Calculated\_MW: 41 kDa

UniProt: [O15143](#)

Pathways: [RTK Signaling, Regulation of Actin Filament Polymerization](#)

## Application Details

Application Notes: WB 1:500-1:2000, IHC 1:50-1:100, ELISA 1:5000-1:10000

Restrictions: For Research Use only

## Handling

Format: Liquid

Concentration: 0.96 mg/mL

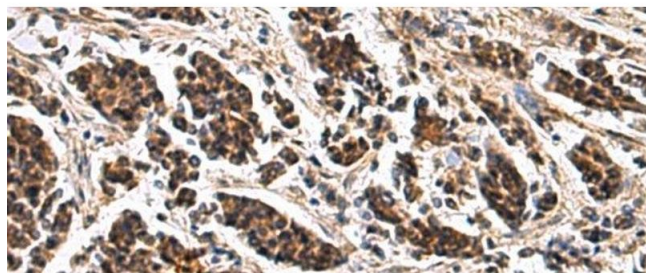
Buffer: PBS with 0.05 % Sodium azide and 40 % Glycerol, pH 7.4

Preservative: Sodium azide

Precaution of Use: This product contains Sodium azide: a POISONOUS AND HAZARDOUS SUBSTANCE which should be handled by trained staff only.

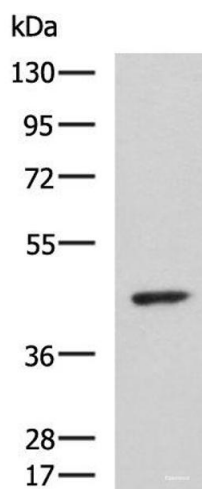
Storage: -20 °C

Storage Comment: Store at -20°C. Avoid freeze / thaw cycles.



#### Immunohistochemistry (Paraffin-embedded Sections)

**Image 1.** Immunohistochemistry of paraffin-embedded Human breast cancer tissue using ARPC1B Polyclonal Antibody at dilution of 1:65(x200)



#### Western Blotting

**Image 2.** Western blot analysis of HeLa cell lysate using ARPC1B Polyclonal Antibody at dilution of 1:1000