



[Go to Product page](#)

Datasheet for ABIN7247834  
**anti-KCNJ10 antibody**

1 Image

Overview

Quantity:	200 µL
Target:	KCNJ10
Reactivity:	Human, Rat, Mouse
Host:	Rabbit
Clonality:	Polyclonal
Conjugate:	This KCNJ10 antibody is un-conjugated
Application:	Immunohistochemistry (IHC), ELISA

Product Details

Immunogen:	Fusion protein of human KCNJ10
Isotype:	IgG
Characteristics:	Polyclonal Antibody
Purification:	Antigen affinity purification

Target Details

Target:	KCNJ10
Alternative Name:	KCNJ10 ( <a href="#">KCNJ10 Products</a> )
Background:	KCNJ10 (Potassium Voltage-Gated Channel Subfamily J Member 10) is a Protein Coding gene. Diseases associated with KCNJ10 include Sesame Syndrome and Deafness, Autosomal Recessive 4, With Enlarged Vestibular Aqueduct. Among its related pathways are Inwardly rectifying K+ channels and GABA receptor activation. GO annotations related to this gene

## Target Details

---

include identical protein binding and potassium channel activity. An important paralog of this gene is KCNJ15. This gene encodes a member of the inward rectifier-type potassium channel family, characterized by having a greater tendency to allow potassium to flow into, rather than out of, a cell. The encoded protein may form a heterodimer with another potassium channel protein and may be responsible for the potassium buffering action of glial cells in the brain. Mutations in this gene have been associated with seizure susceptibility of common idiopathic generalized epilepsy syndromes.

---

UniProt: [P78508](#)

---

Pathways: [Dicarboxylic Acid Transport](#), [Regulation of long-term Neuronal Synaptic Plasticity](#)

## Application Details

---

Application Notes: IHC 1:50-1:200, ELISA 1:5000-1:10000

---

Restrictions: For Research Use only

## Handling

---

Format: Liquid

---

Concentration: 1.08 mg/mL

---

Buffer: PBS with 0.05 % Sodium azide and 40 % Glycerol, pH 7.4

---

Preservative: Sodium azide

---

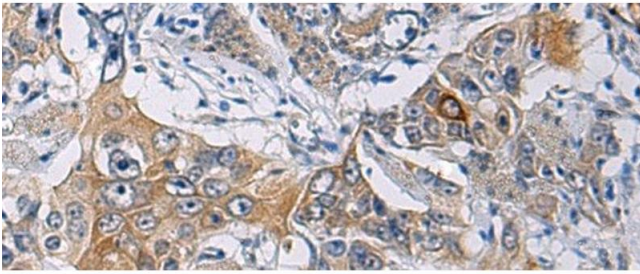
Precaution of Use: This product contains Sodium azide: a POISONOUS AND HAZARDOUS SUBSTANCE which should be handled by trained staff only.

---

Storage: -20 °C

---

Storage Comment: Store at -20°C. Avoid freeze / thaw cycles.



#### Immunohistochemistry (Paraffin-embedded Sections)

**Image 1.** Immunohistochemistry of paraffin-embedded Human esophagus cancer tissue using KCNJ10 Polyclonal Antibody at dilution of 1:60(x200)