

Datasheet for ABIN7247849

anti-SEPHS1 antibody[Go to Product page](#)**1** Image

Overview

Quantity:	200 µL
Target:	SEPHS1
Reactivity:	Human, Mouse
Host:	Rabbit
Clonality:	Polyclonal
Conjugate:	This SEPHS1 antibody is un-conjugated
Application:	Immunohistochemistry (IHC), ELISA

Product Details

Immunogen:	Fusion protein of human SEPHS1
Isotype:	IgG
Characteristics:	Polyclonal Antibody
Purification:	Antigen affinity purification

Target Details

Target:	SEPHS1
Alternative Name:	SEPHS1 (SEPHS1 Products)
Background:	<p>This gene encodes an enzyme that synthesizes selenophosphate from selenide and ATP. Selenophosphate is the selenium donor used to synthesize selenocysteine, which is co-translationally incorporated into selenoproteins at in-frame UGA codons.</p>

Target Details

UniProt: [P49903](#)

Application Details

Application Notes: IHC 1:50-1:200, ELISA 1:5000-1:10000

Restrictions: For Research Use only

Handling

Format: Liquid

Concentration: 0.84 mg/mL

Buffer: PBS with 0.05 % Sodium azide and 40 % Glycerol, pH 7.4

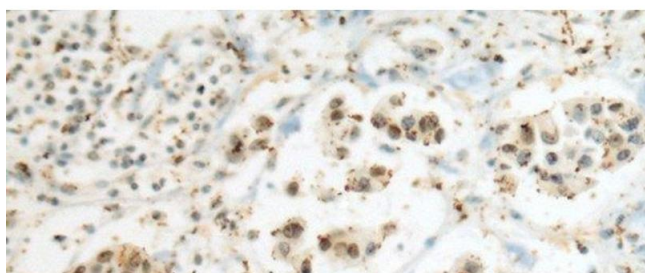
Preservative: Sodium azide

Precaution of Use: This product contains Sodium azide: a POISONOUS AND HAZARDOUS SUBSTANCE which should be handled by trained staff only.

Storage: -20 °C

Storage Comment: Store at -20°C. Avoid freeze / thaw cycles.

Images



Immunohistochemistry (Paraffin-embedded Sections)

Image 1. Immunohistochemistry of paraffin-embedded Human breast cancer tissue using SEPHS1 Polyclonal Antibody at dilution of 1:80(x200)