

Datasheet for ABIN7247864

**anti-PAIP1 antibody****3** Images[Go to Product page](#)

## Overview

Quantity:	200 µL
Target:	PAIP1
Reactivity:	Human, Mouse
Host:	Rabbit
Clonality:	Polyclonal
Conjugate:	This PAIP1 antibody is un-conjugated
Application:	Western Blotting (WB), ELISA, Immunohistochemistry (IHC)

## Product Details

Immunogen:	Fusion protein of human PAIP1
Isotype:	IgG
Characteristics:	Polyclonal Antibody
Purification:	Antigen affinity purification

## Target Details

Target:	PAIP1
Alternative Name:	PAIP1 ( <a href="#">PAIP1 Products</a> )
Background:	<p>The protein encoded by this gene interacts with poly(A)-binding protein and with the cap-binding complex eIF4A. It is involved in translational initiation and protein biosynthesis.</p> <p>Overexpression of this gene in COS7 cells stimulates translation. Alternative splicing occurs at this locus and three transcript variants encoding three distinct isoforms have been identified.</p>

## Target Details

Molecular Weight: Observed\_MW: Refer to figures  
Calculated\_MW: 54 kDa

UniProt: [Q9H074](#)

## Application Details

Application Notes: WB 1:500-1:2000, IHC 1:50-1:200, ELISA 1:5000-1:10000

Restrictions: For Research Use only

## Handling

Format: Liquid

Concentration: 1.14 mg/mL

Buffer: PBS with 0.05 % Sodium azide and 40 % Glycerol, pH 7.4

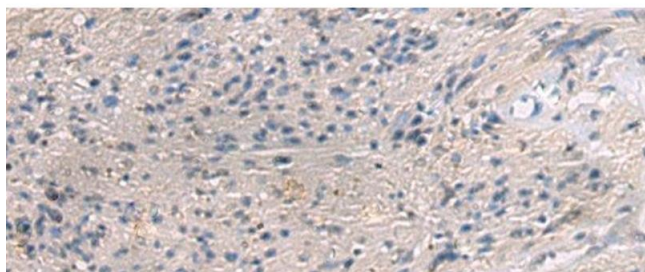
Preservative: Sodium azide

Precaution of Use: This product contains Sodium azide: a POISONOUS AND HAZARDOUS SUBSTANCE which should be handled by trained staff only.

Storage: -20 °C

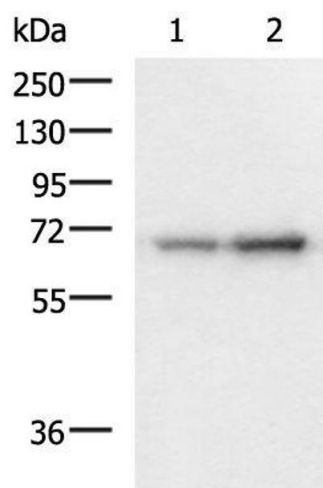
Storage Comment: Store at -20°C. Avoid freeze / thaw cycles.

## Images



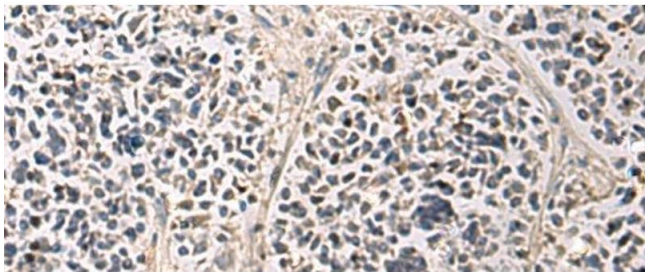
### Immunohistochemistry (Paraffin-embedded Sections)

**Image 1.** Immunohistochemistry of paraffin-embedded Human brain tissue using PAIP1 Polyclonal Antibody at dilution of 1:80(x200)



Western Blotting

**Image 2.** Western blot analysis of 293T and HepG2 cell lysates using PAIP1 Polyclonal Antibody at dilution of 1:1150



Immunohistochemistry (Paraffin-embedded Sections)

**Image 3.** Immunohistochemistry of paraffin-embedded Human breast cancer tissue using PAIP1 Polyclonal Antibody at dilution of 1:80(x200)