



[Go to Product page](#)

Datasheet for ABIN7247885
anti-Cullin 4A antibody

3 Images

Overview

Quantity:	200 µL
Target:	Cullin 4A (CUL4A)
Reactivity:	Human, Mouse
Host:	Rabbit
Clonality:	Polyclonal
Conjugate:	This Cullin 4A antibody is un-conjugated
Application:	Western Blotting (WB), ELISA, Immunohistochemistry (IHC)

Product Details

Immunogen:	Synthetic peptide of human CUL4A
Isotype:	IgG
Characteristics:	Polyclonal Antibody
Purification:	Antigen affinity purification

Target Details

Target:	Cullin 4A (CUL4A)
Alternative Name:	CUL4A (CUL4A Products)
Background:	Cullin proteins assemble a large number of RING E3 ubiquitin ligases, participating in the proteolysis through the ubiquitin-proteasome pathway. Two cullin 4 (CUL4) proteins, CUL4A (87 kDa) and CUL4B (104 kDa), have been identified. The two CUL4 sequences are 83 % identical. They target certain proteins for degradation by binding protein DDB1 to form a CUL4-DDB1

Target Details

ubiquitin ligase complex with DDB. They form two individual E3 ligases, DDB1-CUL4A and DDB1-CUL4B. DDB1-CUL4A appeared in both the nucleus and the cytosol, suggesting a more complex mechanism for entering the nucleus. CUL4B is localized in the nucleus and facilitates the transfer of DDB1 into the nucleus independently of DDB2.

Molecular Weight: Observed_MW: Refer to figures
Calculated_MW: 88 kDa

UniProt: [Q13619](#)

Application Details

Application Notes: WB 1:500-1:2000, IHC 1:50-1:300, ELISA 1:5000-1:10000

Restrictions: For Research Use only

Handling

Format: Liquid

Concentration: 1.62 mg/mL

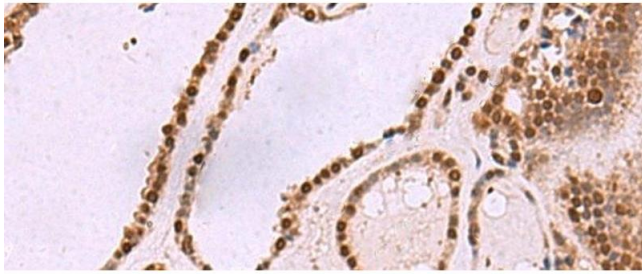
Buffer: PBS with 0.05 % Sodium azide and 40 % Glycerol, pH 7.4

Preservative: Sodium azide

Precaution of Use: This product contains Sodium azide: a POISONOUS AND HAZARDOUS SUBSTANCE which should be handled by trained staff only.

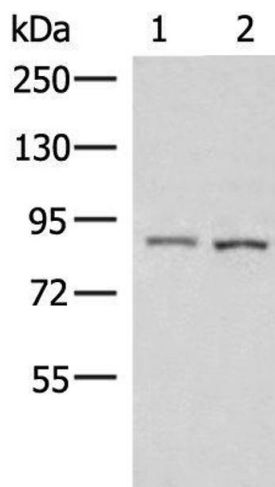
Storage: -20 °C

Storage Comment: Store at -20°C. Avoid freeze / thaw cycles.



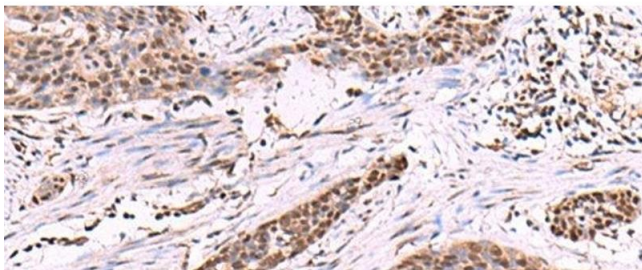
Immunohistochemistry (Paraffin-embedded Sections)

Image 1. Immunohistochemistry of paraffin-embedded Human thyroid cancer tissue using CUL4A Polyclonal Antibody at dilution of 1:55(x200)



Western Blotting

Image 2. Western blot analysis of 231 and HepG2 cell lysates using CUL4A Polyclonal Antibody at dilution of 1:600



Immunohistochemistry (Paraffin-embedded Sections)

Image 3. Immunohistochemistry of paraffin-embedded Human esophagus cancer tissue using CUL4A Polyclonal Antibody at dilution of 1:55(x200)