

Datasheet for ABIN7247894

**anti-MAPK4 antibody**

3 Images

[Go to Product page](#)

## Overview

Quantity:	200 µL
Target:	MAPK4
Reactivity:	Human, Mouse
Host:	Rabbit
Clonality:	Polyclonal
Conjugate:	This MAPK4 antibody is un-conjugated
Application:	Western Blotting (WB), ELISA, Immunohistochemistry (IHC)

## Product Details

Immunogen:	Synthetic peptide of human MAPK4
Isotype:	IgG
Characteristics:	Polyclonal Antibody
Purification:	Antigen affinity purification

## Target Details

Target:	MAPK4
Alternative Name:	MAPK4 ( <a href="#">MAPK4 Products</a> )
Background:	Mitogen-activated protein kinase 4 is a member of the mitogen-activated protein kinase family. Tyrosine kinase growth factor receptors activate mitogen-activated protein kinases which then translocate into the nucleus and phosphorylate nuclear targets. Alternative splicing results in multiple transcript variants.

## Target Details

Molecular Weight: Observed\_MW: Refer to figures  
Calculated\_MW: 66 kDa

UniProt: [P31152](#)

Pathways: [MAPK Signaling](#)

## Application Details

Application Notes: WB 1:500-1:2000, IHC 1:30-1:150, ELISA 1:5000-1:10000

Restrictions: For Research Use only

## Handling

Format: Liquid

Concentration: 1.32 mg/mL

Buffer: PBS with 0.05 % Sodium azide and 40 % Glycerol, pH 7.4

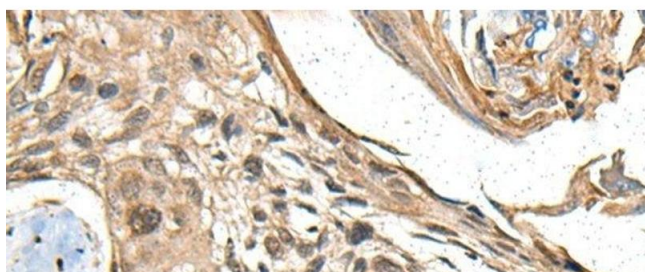
Preservative: Sodium azide

Precaution of Use: This product contains Sodium azide: a POISONOUS AND HAZARDOUS SUBSTANCE which should be handled by trained staff only.

Storage: -20 °C

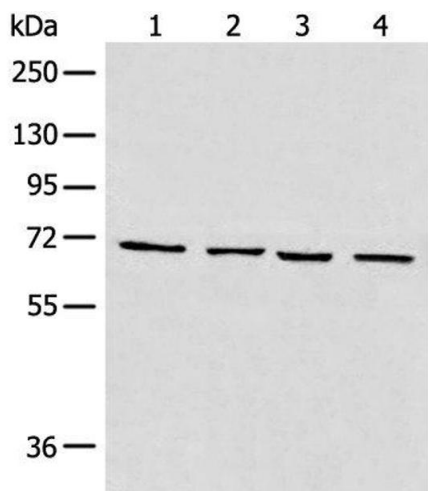
Storage Comment: Store at -20°C. Avoid freeze / thaw cycles.

## Images



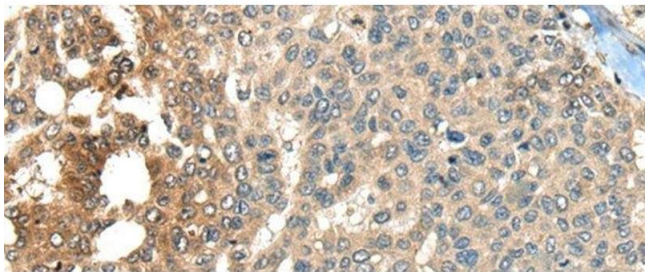
### Immunohistochemistry (Paraffin-embedded Sections)

**Image 1.** Immunohistochemistry of paraffin-embedded Human esophagus cancer tissue using MAPK4 Polyclonal Antibody at dilution of 1:35(x200)



#### Western Blotting

**Image 2.** Western blot analysis of 293T cell Human heart tissue Raji and LNCAP cell lysates using MAPK4 Polyclonal Antibody at dilution of 1:550



#### Immunohistochemistry (Paraffin-embedded Sections)

**Image 3.** Immunohistochemistry of paraffin-embedded Human liver cancer tissue using MAPK4 Polyclonal Antibody at dilution of 1:35(x200)