

Datasheet for ABIN7247915
anti-Motilin Receptor antibody

3 Images

[Go to Product page](#)

Overview

Quantity:	200 µL
Target:	Motilin Receptor (MLNR)
Reactivity:	Human
Host:	Rabbit
Clonality:	Polyclonal
Conjugate:	This Motilin Receptor antibody is un-conjugated
Application:	Western Blotting (WB), ELISA, Immunohistochemistry (IHC)

Product Details

Immunogen:	Synthetic peptide of human MLNR
Isotype:	IgG
Characteristics:	Polyclonal Antibody
Purification:	Antigen affinity purification

Target Details

Target:	Motilin Receptor (MLNR)
Alternative Name:	MLNR (MLNR Products)
Background:	Motilin is a 22 amino acid peptide hormone expressed throughout the gastrointestinal (GI) tract. The protein encoded by this gene is a motilin receptor which is a member of the G-protein coupled receptor 1 family. This member is a multi-pass transmembrane protein, and is an important therapeutic target for the treatment of hypomotility disorders.

Target Details

Molecular Weight: Observed_MW: Refer to figures
Calculated_MW: 45 kDa

UniProt: [O43193](#)

Application Details

Application Notes: WB 1:500-1:2000, IHC 1:30-1:150, ELISA 1:5000-1:10000

Restrictions: For Research Use only

Handling

Format: Liquid

Concentration: 0.96 mg/mL

Buffer: PBS with 0.05 % Sodium azide and 40 % Glycerol, pH 7.4

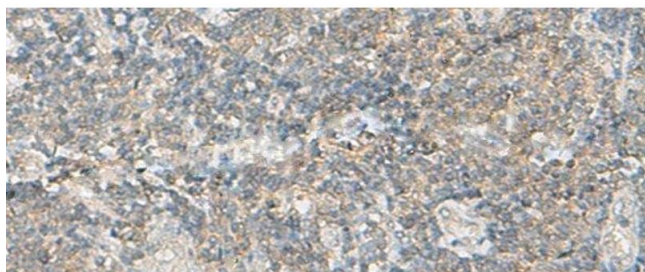
Preservative: Sodium azide

Precaution of Use: This product contains Sodium azide: a POISONOUS AND HAZARDOUS SUBSTANCE which should be handled by trained staff only.

Storage: -20 °C

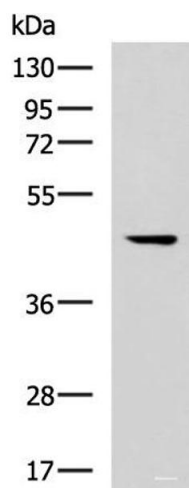
Storage Comment: Store at -20°C. Avoid freeze / thaw cycles.

Images



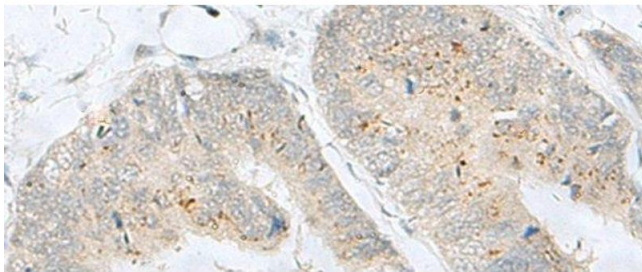
Immunohistochemistry (Paraffin-embedded Sections)

Image 1. Immunohistochemistry of paraffin-embedded Human tonsil tissue using MLNR Polyclonal Antibody at dilution of 1:35(x200)



Western Blotting

Image 2. Western blot analysis of 293T cell lysate using MLNR Polyclonal Antibody at dilution of 1:500



Immunohistochemistry (Paraffin-embedded Sections)

Image 3. Immunohistochemistry of paraffin-embedded Human colorectal cancer tissue using MLNR Polyclonal Antibody at dilution of 1:35(x200)