

Datasheet for ABIN7247918

anti-CKMT1 antibody

3 Images

[Go to Product page](#)

Overview

Quantity:	200 µL
Target:	CKMT1
Reactivity:	Human
Host:	Rabbit
Clonality:	Polyclonal
Conjugate:	This CKMT1 antibody is un-conjugated
Application:	Western Blotting (WB), ELISA, Immunohistochemistry (IHC)

Product Details

Immunogen:	Synthetic peptide of human CKMT1A/CKMT1B
Isotype:	IgG
Characteristics:	Polyclonal Antibody
Purification:	Antigen affinity purification

Target Details

Target:	CKMT1
Alternative Name:	CKMT1A/CKMT1B (CKMT1 Products)
Background:	Mitochondrial creatine (MtCK) kinase is responsible for the transfer of high energy phosphate from mitochondria to the cytosolic carrier, creatine. It belongs to the creatine kinase isoenzyme family. It exists as two isoenzymes, sarcomeric MtCK and ubiquitous MtCK, encoded by separate genes. Mitochondrial creatine kinase occurs in two different oligomeric forms: dimers

Target Details

and octamers, in contrast to the exclusively dimeric cytosolic creatine kinase isoenzymes. Many malignant cancers with poor prognosis have shown overexpression of ubiquitous mitochondrial creatine kinase, this may be related to high energy turnover and failure to eliminate cancer cells via apoptosis. Ubiquitous mitochondrial creatine kinase has 80 % homology with the coding exons of sarcomeric mitochondrial creatine kinase. Two genes located near each other on chromosome 15 have been identified which encode identical mitochondrial creatine kinase proteins.

Molecular Weight:	Observed_MW: Refer to figures Calculated_MW: 47 kDa
-------------------	--

UniProt:	P12532
----------	------------------------

Application Details

Application Notes:	WB 1:500-1:2000, IHC 1:40-1:200, ELISA 1:5000-1:10000
--------------------	---

Restrictions:	For Research Use only
---------------	-----------------------

Handling

Format:	Liquid
---------	--------

Concentration:	1.68 mg/mL
----------------	------------

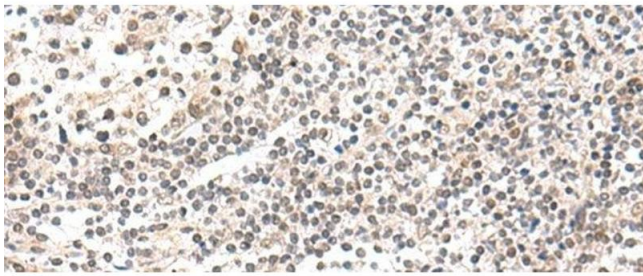
Buffer:	PBS with 0.05 % Sodium azide and 40 % Glycerol, pH 7.4
---------	--

Preservative:	Sodium azide
---------------	--------------

Precaution of Use:	This product contains Sodium azide: a POISONOUS AND HAZARDOUS SUBSTANCE which should be handled by trained staff only.
--------------------	--

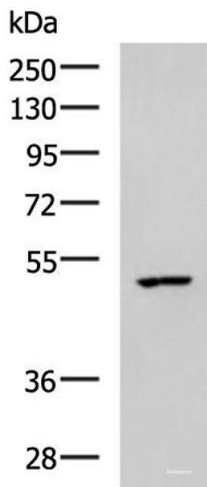
Storage:	-20 °C
----------	--------

Storage Comment:	Store at -20°C. Avoid freeze / thaw cycles.
------------------	---



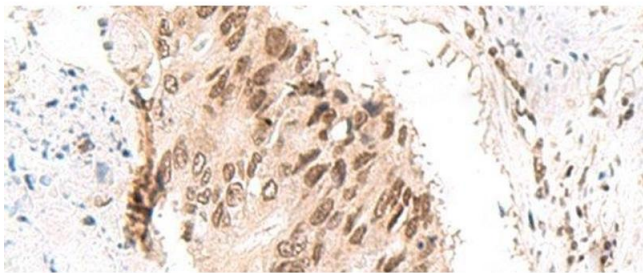
Immunohistochemistry (Paraffin-embedded Sections)

Image 1. Immunohistochemistry of paraffin-embedded Human tonsil tissue using CKMT1A/CKMT1B Polyclonal Antibody at dilution of 1:55(x200)



Western Blotting

Image 2. Western blot analysis of MCF7 cell lysate using CKMT1A/CKMT1B Polyclonal Antibody at dilution of 1:600



Immunohistochemistry (Paraffin-embedded Sections)

Image 3. Immunohistochemistry of paraffin-embedded Human colorectal cancer tissue using CKMT1A/CKMT1B Polyclonal Antibody at dilution of 1:55(x200)