

Datasheet for ABIN7247924

anti-PAX5 antibody

2 Images

[Go to Product page](#)

Overview

Quantity:	200 µL
Target:	PAX5
Reactivity:	Human, Mouse
Host:	Rabbit
Clonality:	Polyclonal
Conjugate:	This PAX5 antibody is un-conjugated
Application:	ELISA, Immunohistochemistry (IHC)

Product Details

Immunogen:	Synthetic peptide of human PAX5
Isotype:	IgG
Characteristics:	Polyclonal Antibody
Purification:	Antigen affinity purification

Target Details

Target:	PAX5
Alternative Name:	PAX5 (PAX5 Products)
Background:	<p>PAX5,also named B-cell specific activator protein (BSAP),is a member of the highly conserved paired box (PAX)-domain family of transcription factors. PAX5 is essential in normal B-cell lymphopoiesis. It is expressed in pro-B,pre-B and mature B lymphocytes but not in plasma cells.</p> <p>PAX5 is a common target in leukemogenesis of B-ALL (B-lineage acute lymphoblastic</p>

Target Details

leukemia) along with CDKN2A. Owing to its frequent deletion in B-ALL, PAX5 could be used as one of the molecular markers in diagnosis and monitoring of the disease. This antibody is specific to PAX5. It will not cross react with other PAX members.

UniProt: [Q02548](#)

Application Details

Application Notes: IHC 1:30-1:150, ELISA 1:5000-1:10000

Restrictions: For Research Use only

Handling

Format: Liquid

Concentration: 0.84 mg/mL

Buffer: PBS with 0.05 % Sodium azide and 40 % Glycerol, pH 7.4

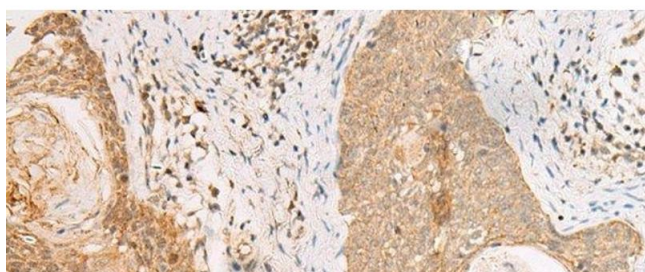
Preservative: Sodium azide

Precaution of Use: This product contains Sodium azide: a POISONOUS AND HAZARDOUS SUBSTANCE which should be handled by trained staff only.

Storage: -20 °C

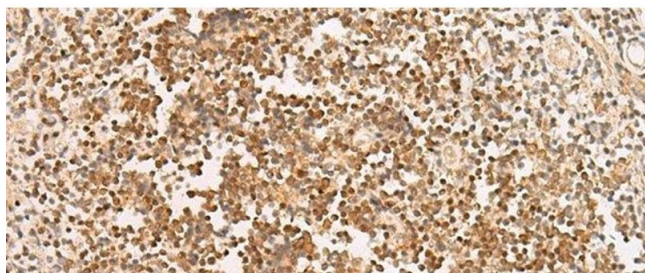
Storage Comment: Store at -20°C. Avoid freeze / thaw cycles.

Images



Immunohistochemistry (Paraffin-embedded Sections)

Image 1. Immunohistochemistry of paraffin-embedded Human esophagus cancer tissue using PAX5 Polyclonal Antibody at dilution of 1:30(x200)



Immunohistochemistry (Paraffin-embedded Sections)

Image 2. Immunohistochemistry of paraffin-embedded Human prostate cancer tissue using PAX5 Polyclonal Antibody at dilution of 1:30(x200)