

Datasheet for ABIN7247939

anti-KEAP1 antibody**2** Images[Go to Product page](#)

Overview

Quantity:	200 µL
Target:	KEAP1
Reactivity:	Human, Mouse, Rat
Host:	Rabbit
Clonality:	Polyclonal
Conjugate:	This KEAP1 antibody is un-conjugated
Application:	Western Blotting (WB), ELISA, Immunohistochemistry (IHC)

Product Details

Immunogen:	Synthetic peptide of human KEAP1
Isotype:	IgG
Characteristics:	Polyclonal Antibody
Purification:	Antigen affinity purification

Target Details

Target:	KEAP1
Alternative Name:	KEAP1 (KEAP1 Products)
Background:	KEAP1,also named as INRF2,KIAA0132 and KLHL19,is part of a multiprotein complex that contains the CUL3-ROC1 ubiquitin ligase,which can ubiquitinate the N-terminal domain of NRF2. Two molecules of KEAP1 bind to two distinct sites in the N-terminal region of NRF2,the ETGE and DLG sites,which affect the KEAP1-NRF2 interaction and/or its physiological

Target Details

consequences. KEAP1 retains NFE2L2/NRF2 in the cytosol. It functions as substrate adapter protein for the E3 ubiquitin ligase complex formed by CUL3 and RBX1. It also retains BPTF in the cytosol. This antibody is a mouse monoclonal antibody raised against residues near the C terminus of human KEAP1.

Molecular Weight: Observed_MW: Refer to figures
Calculated_MW: 70 kDa

UniProt: [Q14145](#)

Pathways: [Maintenance of Protein Location](#)

Application Details

Application Notes: WB 1:500-1:2000, IHC 1:25-1:100, ELISA 1:5000-1:10000

Restrictions: For Research Use only

Handling

Format: Liquid

Concentration: 0.8 mg/mL

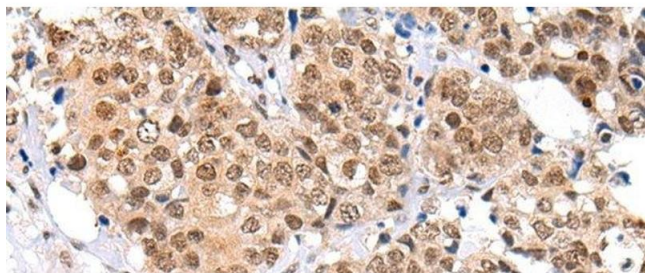
Buffer: PBS with 0.05 % Sodium azide and 40 % Glycerol, pH 7.4

Preservative: Sodium azide

Precaution of Use: This product contains Sodium azide: a POISONOUS AND HAZARDOUS SUBSTANCE which should be handled by trained staff only.

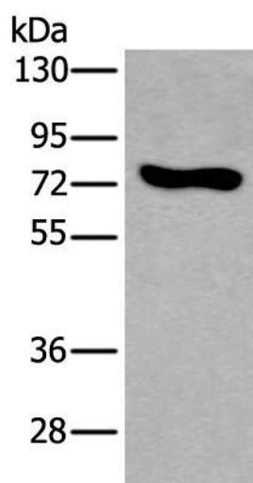
Storage: -20 °C

Storage Comment: Store at -20°C. Avoid freeze / thaw cycles.



Immunohistochemistry (Paraffin-embedded Sections)

Image 1. Immunohistochemistry of paraffin-embedded Human breast cancer tissue using KEAP1 Polyclonal Antibody at dilution of 1:35(x200)



Western Blotting

Image 2. Western blot analysis of NIH/3T3 cell lysate using KEAP1 Polyclonal Antibody at dilution of 1:600