

Datasheet for ABIN7247984
anti-Glutaminase antibody

3 Images

[Go to Product page](#)

Overview

Quantity:	200 µL
Target:	Glutaminase (GLS)
Reactivity:	Human, Mouse, Rat
Host:	Rabbit
Clonality:	Polyclonal
Conjugate:	This Glutaminase antibody is un-conjugated
Application:	Western Blotting (WB), ELISA, Immunohistochemistry (IHC)

Product Details

Immunogen:	Synthetic peptide of human GLS
Isotype:	IgG
Characteristics:	Polyclonal Antibody
Purification:	Antigen affinity purification

Target Details

Target:	Glutaminase (GLS)
Alternative Name:	GLS (GLS Products)
Background:	GLS,also named as GLS1 and KIAA0838,belongs to the glutaminase family. It catalyzes the first reaction in the primary pathway for the renal catabolism of glutamine. Glutaminase-,glutamate-,and taurine-immunoreactive neurons develop neurofibrillary tangles in Alzheimer's disease.The glutaminase band in AA/C1 cells is more intense than in HT29 cells,in accordance with

Target Details

measurements of glutaminase activity, and had the same molecular mass of approx. 63 kDa. The bands for both cell lines are clearly different in size from both rat liver glutaminase (58 kDa) and rat kidney glutaminase (65 kDa). It also reveals a molecular weight of 83-84 kDa as a phosphate-dependent glutaminase. It has 3 isoforms named as KGA, GAM, GAC.

Molecular Weight: Observed_MW: Refer to figures
Calculated_MW: 73 kDa

UniProt: [O94925](#)

Pathways: [Feeding Behaviour](#), [Dicarboxylic Acid Transport](#), [Warburg Effect](#)

Application Details

Application Notes: WB 1:500-1:2000, IHC 1:50-1:200, ELISA 1:5000-1:10000

Restrictions: For Research Use only

Handling

Format: Liquid

Concentration: 1.02 mg/mL

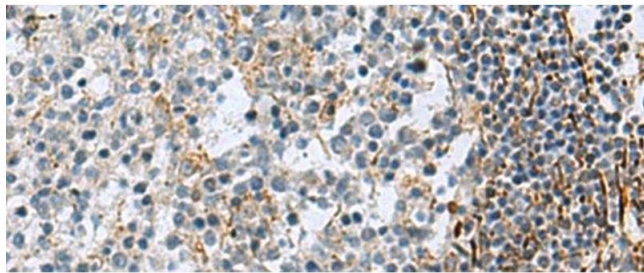
Buffer: PBS with 0.05 % Sodium azide and 40 % Glycerol, pH 7.4

Preservative: Sodium azide

Precaution of Use: This product contains Sodium azide: a POISONOUS AND HAZARDOUS SUBSTANCE which should be handled by trained staff only.

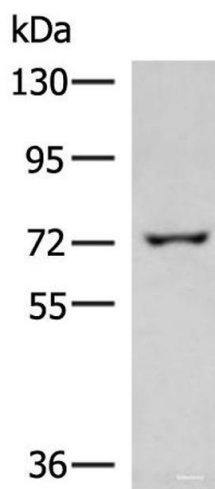
Storage: -20 °C

Storage Comment: Store at -20°C. Avoid freeze / thaw cycles.



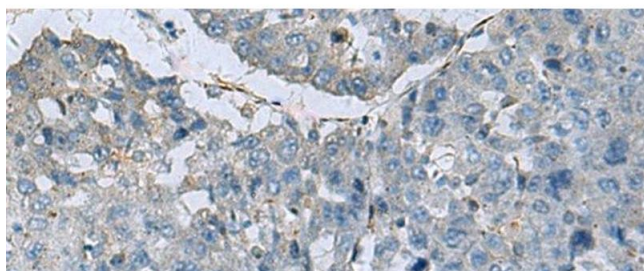
Immunohistochemistry (Paraffin-embedded Sections)

Image 1. Immunohistochemistry of paraffin-embedded Human tonsil tissue using GLS Polyclonal Antibody at dilution of 1:70(x200)



Western Blotting

Image 2. Western blot analysis of 293T cell lysate using GLS Polyclonal Antibody at dilution of 1:850



Immunohistochemistry (Paraffin-embedded Sections)

Image 3. Immunohistochemistry of paraffin-embedded Human liver cancer tissue using GLS Polyclonal Antibody at dilution of 1:70(x200)