

Datasheet for ABIN7248041

**anti-GADD34 antibody**[Go to Product page](#)**1** Image

## Overview

Quantity:	200 µL
Target:	GADD34 (PPP1R15A)
Reactivity:	Human
Host:	Rabbit
Clonality:	Polyclonal
Conjugate:	This GADD34 antibody is un-conjugated
Application:	ELISA, Immunohistochemistry (IHC)

## Product Details

Immunogen:	Synthetic peptide of human PPP1R15A
Isotype:	IgG
Characteristics:	Polyclonal Antibody
Purification:	Antigen affinity purification

## Target Details

Target:	GADD34 (PPP1R15A)
Alternative Name:	PPP1R15A ( <a href="#">PPP1R15A Products</a> )
Background:	PPP1R15A (Protein Phosphatase 1 Regulatory Subunit 15A) is a Protein Coding gene. Diseases associated with PPP1R15A include Malignant Pleural Mesothelioma. Among its related pathways are Transcriptional activity of SMAD2/SMAD3-SMAD4 heterotrimer and Activation of cAMP-Dependent PKA. GO annotations related to this gene include protein kinase binding. This

## Target Details

gene is a member of a group of genes whose transcript levels are increased following stressful growth arrest conditions and treatment with DNA-damaging agents. The induction of this gene by ionizing radiation occurs in certain cell lines regardless of p53 status, and its protein response is correlated with apoptosis following ionizing radiation.

UniProt: [O75807](#)

Pathways: [ER-Nucleus Signaling](#), [Unfolded Protein Response](#)

## Application Details

Application Notes: IHC 1:30-1:150, ELISA 1:2000-1:10000

Restrictions: For Research Use only

## Handling

Format: Liquid

Concentration: 1.8 mg/mL

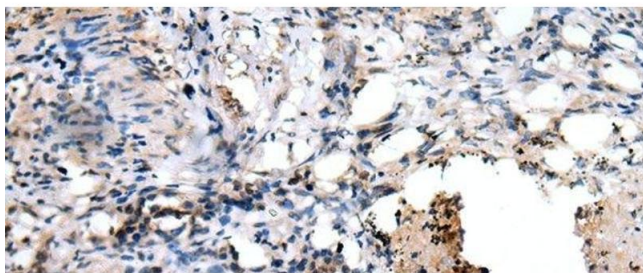
Buffer: PBS with 0.05 % Sodium azide and 40 % Glycerol, pH 7.4

Preservative: Sodium azide

Precaution of Use: This product contains Sodium azide: a POISONOUS AND HAZARDOUS SUBSTANCE which should be handled by trained staff only.

Storage: -20 °C

Storage Comment: Store at -20°C. Avoid freeze / thaw cycles.



#### Immunohistochemistry (Paraffin-embedded Sections)

**Image 1.** Immunohistochemistry of paraffin-embedded Human lung cancer tissue using PPP1R15A Polyclonal Antibody at dilution of 1:45(x200)