

Datasheet for ABIN7248071
anti-Peroxiredoxin 4 antibody[Go to Product page](#)

2 Images

Overview

Quantity:	200 µL
Target:	Peroxiredoxin 4 (PRDX4)
Reactivity:	Human, Mouse, Rat
Host:	Rabbit
Clonality:	Polyclonal
Conjugate:	This Peroxiredoxin 4 antibody is un-conjugated
Application:	Western Blotting (WB), Immunohistochemistry (IHC), ELISA

Product Details

Immunogen:	Synthetic peptide of human PRDX4
Isotype:	IgG
Characteristics:	Polyclonal Antibody
Purification:	Antigen affinity purification

Target Details

Target:	Peroxiredoxin 4 (PRDX4)
Alternative Name:	PRDX4 (PRDX4 Products)
Background:	PRDX4(Peroxiredoxin-4) is also named as AOE37-2,Prx-IV and belongs to the AhpC/TSA family. PRDX4 is associated with acrosome formation during rat spermatogenesis and has a protective role in the male reproductive tract,because the phenotype of mice lacking this isoform includes testicular atrophy and increased sperm DNA damage. It is initially synthesized

Target Details

as a membrane-binding 31- kDa protein and processed into a 27- kDa secretory form and is discarded with the residual bodies. PRDX4 is a pentamer of dimers.

Molecular Weight: Observed_MW: Refer to figures
Calculated_MW: 30 kDa

UniProt: [Q13162](#)

Application Details

Application Notes: WB 1:500-1:2000, IHC 1:25-1:100, ELISA 1:5000-1:10000

Restrictions: For Research Use only

Handling

Format: Liquid

Concentration: 0.8 mg/mL

Buffer: PBS with 0.05 % Sodium azide and 40 % Glycerol, pH 7.4

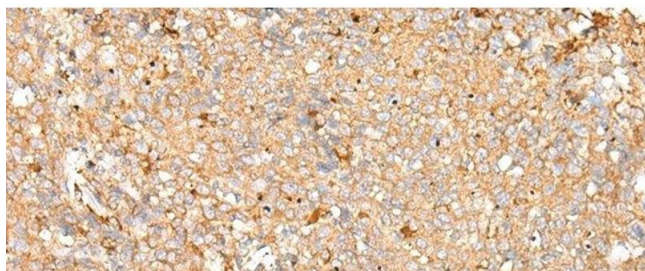
Preservative: Sodium azide

Precaution of Use: This product contains Sodium azide: a POISONOUS AND HAZARDOUS SUBSTANCE which should be handled by trained staff only.

Storage: -20 °C

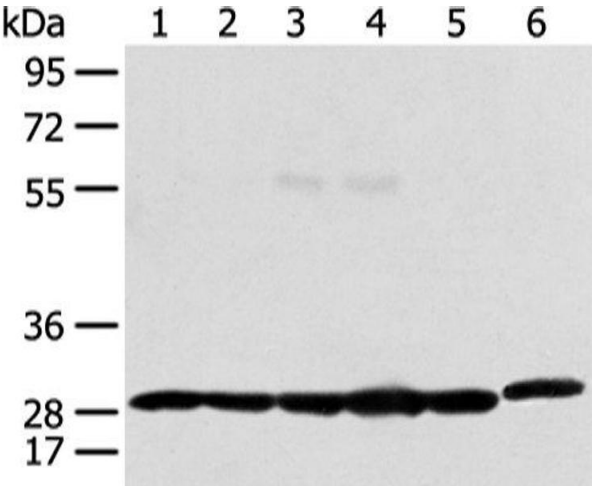
Storage Comment: Store at -20°C. Avoid freeze / thaw cycles.

Images



Immunohistochemistry (Paraffin-embedded Sections)

Image 1. Immunohistochemistry of paraffin-embedded Human cervical cancer tissue using PRDX4 Polyclonal Antibody at dilution of 1:25(x200)



Western Blotting

Image 2. Western blot analysis of 293T Raji and Hela cell using PRDX4 Polyclonal Antibody at dilution of 1:400