



Datasheet for ABIN7248086 anti-P2RY4 antibody



[Go to Product page](#)

1 Image

Overview

| | |
|--------------|--------------------------------------|
| Quantity: | 200 µL |
| Target: | P2RY4 |
| Reactivity: | Human, Mouse |
| Host: | Rabbit |
| Clonality: | Polyclonal |
| Conjugate: | This P2RY4 antibody is un-conjugated |
| Application: | ELISA, Immunohistochemistry (IHC) |

Product Details

| | |
|------------------|----------------------------------|
| Immunogen: | Synthetic peptide of human P2RY4 |
| Isotype: | IgG |
| Characteristics: | Polyclonal Antibody |
| Purification: | Antigen affinity purification |

Target Details

| | |
|-------------------|---|
| Target: | P2RY4 |
| Alternative Name: | P2RY4 (P2RY4 Products) |
| Background: | The product of this gene belongs to the family of G-protein coupled receptors. This family has several receptor subtypes with different pharmacological selectivity, which overlaps in some cases, for various adenosine and uridine nucleotides. This receptor is responsive to uridine nucleotides, partially responsive to ATP, and not responsive to ADP. |

Target Details

UniProt: [P51582](#)

Application Details

Application Notes: IHC 1:30-1:150, ELISA 1:5000-1:10000

Restrictions: For Research Use only

Handling

Format: Liquid

Concentration: 1.7 mg/mL

Buffer: PBS with 0.05 % Sodium azide and 40 % Glycerol, pH 7.4

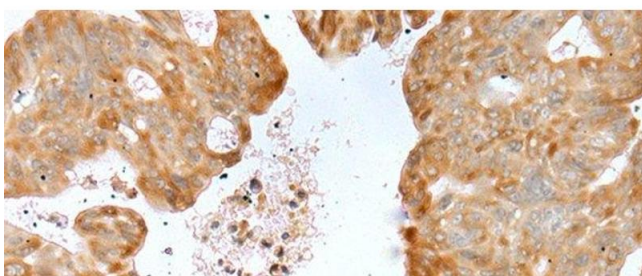
Preservative: Sodium azide

Precaution of Use: This product contains Sodium azide: a POISONOUS AND HAZARDOUS SUBSTANCE which should be handled by trained staff only.

Storage: -20 °C

Storage Comment: Store at -20°C. Avoid freeze / thaw cycles.

Images



Immunohistochemistry (Paraffin-embedded Sections)

Image 1. Immunohistochemistry of paraffin-embedded Human gastric cancer tissue using P2RY4 Polyclonal Antibody at dilution of 1:40(x200)