

Datasheet for ABIN7248107

anti-GPC5 antibody[Go to Product page](#)**1** Image

Overview

Quantity:	200 µL
Target:	GPC5
Reactivity:	Human
Host:	Rabbit
Clonality:	Polyclonal
Conjugate:	This GPC5 antibody is un-conjugated
Application:	Western Blotting (WB), ELISA

Product Details

Immunogen:	Synthetic peptide of human GPC5
Isotype:	IgG
Characteristics:	Polyclonal Antibody
Purification:	Antigen affinity purification

Target Details

Target:	GPC5
Alternative Name:	GPC5 (GPC5 Products)
Background:	Cell surface heparan sulfate proteoglycans are composed of a membrane-associated protein core substituted with a variable number of heparan sulfate chains. Members of the glypican-related integral membrane proteoglycan family (GRIPS) contain a core protein anchored to the cytoplasmic membrane via a glycosyl phosphatidylinositol linkage. These proteins may play a

Target Details

	role in the control of cell division and growth regulation.
Molecular Weight:	Observed_MW: Refer to figures Calculated_MW: 64 kDa
UniProt:	P78333
Pathways:	Glycosaminoglycan Metabolic Process

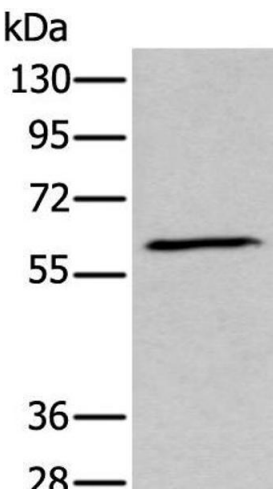
Application Details

Application Notes:	WB 1:500-1:2000, ELISA 1:5000-1:10000
Restrictions:	For Research Use only

Handling

Format:	Liquid
Concentration:	0.7 mg/mL
Buffer:	PBS with 0.05 % Sodium azide and 40 % Glycerol, pH 7.4
Preservative:	Sodium azide
Precaution of Use:	This product contains Sodium azide: a POISONOUS AND HAZARDOUS SUBSTANCE which should be handled by trained staff only.
Storage:	-20 °C
Storage Comment:	Store at -20°C. Avoid freeze / thaw cycles.

Images



Western Blotting

Image 1. Western blot analysis of Human fetal brain tissue lysate using GPC5 Polyclonal Antibody at dilution of 1:450