

Datasheet for ABIN7248113

anti-GLI1 antibody**2** Images[Go to Product page](#)

Overview

Quantity:	200 µL
Target:	GLI1
Reactivity:	Human, Mouse
Host:	Rabbit
Clonality:	Polyclonal
Conjugate:	This GLI1 antibody is un-conjugated
Application:	Western Blotting (WB), ELISA, Immunohistochemistry (IHC)

Product Details

Immunogen:	Synthetic peptide of human GLI1
Isotype:	IgG
Characteristics:	Polyclonal Antibody
Purification:	Antigen affinity purification

Target Details

Target:	GLI1
Alternative Name:	GLI1 (GLI1 Products)
Background:	GLI1 (GLI Family Zinc Finger 1) is a Protein Coding gene. Diseases associated with GLI1 include Basal Cell Carcinoma and Necrobiosis Lipoidica. Among its related pathways are Wnt Signaling Pathways: beta-Catenin-independent Wnt/Ca2+ Signaling and Other Non-canonical Wnt Signaling Pathways and G-Beta Gamma Signaling. GO annotations related to this gene include

Target Details

chromatin binding and microtubule binding. An important paralog of this gene is GLI2. This gene encodes a member of the Kruppel family of zinc finger proteins. The encoded transcription factor is activated by the sonic hedgehog signal transduction cascade and regulates stem cell proliferation. The activity and nuclear localization of this protein is negatively regulated by p53 in an inhibitory loop. Multiple transcript variants encoding different isoforms have been found for this gene.

Molecular Weight:	Observed_MW: Refer to figures Calculated_MW: 118 kDa
-------------------	---

UniProt:	P08151
----------	------------------------

Pathways:	Hedgehog Signaling , Dopaminergic Neurogenesis
-----------	--

Application Details

Application Notes:	WB 1:500-1:2000, IHC 1:50-1:100, ELISA 1:5000-1:10000
--------------------	---

Restrictions:	For Research Use only
---------------	-----------------------

Handling

Format:	Liquid
---------	--------

Concentration:	1.08 mg/mL
----------------	------------

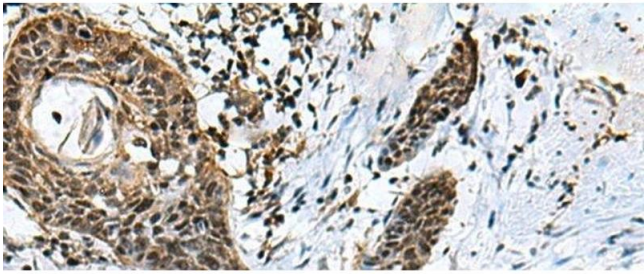
Buffer:	PBS with 0.05 % Sodium azide and 40 % Glycerol, pH 7.4
---------	--

Preservative:	Sodium azide
---------------	--------------

Precaution of Use:	This product contains Sodium azide: a POISONOUS AND HAZARDOUS SUBSTANCE which should be handled by trained staff only.
--------------------	--

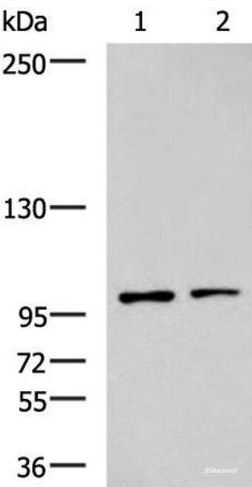
Storage:	-20 °C
----------	--------

Storage Comment:	Store at -20°C. Avoid freeze / thaw cycles.
------------------	---



Immunohistochemistry (Paraffin-embedded Sections)

Image 1. Immunohistochemistry of paraffin-embedded Human esophagus cancer tissue using GLI1 Polyclonal Antibody at dilution of 1:40(x200)



Western Blotting

Image 2. Western blot analysis of Raji and HepG2 cell lysates using GLI1 Polyclonal Antibody at dilution of 1:900