



Datasheet for ABIN7248167

## anti-IRF5 antibody

3 Images



[Go to Product page](#)

### Overview

Quantity:	200 µL
Target:	IRF5
Reactivity:	Human, Mouse
Host:	Rabbit
Clonality:	Polyclonal
Conjugate:	This IRF5 antibody is un-conjugated
Application:	Western Blotting (WB), ELISA, Immunohistochemistry (IHC)

### Product Details

Immunogen:	Synthetic peptide of human IRF5
Isotype:	IgG
Characteristics:	Polyclonal Antibody
Purification:	Antigen affinity purification

### Target Details

Target:	IRF5
Alternative Name:	IRF5 ( <a href="#">IRF5 Products</a> )
Background:	IRF5, also named as SLEB10, contains one IRF tryptophan pentad repeat DNA-binding domain and belongs to the IRF family. It is a transcription factor involved in the induction of interferons IFNA and INFB and inflammatory cytokines upon virus infection. It is activated by TLR7 or TLR8 signaling. Genetic variations in IRF5 are associated with susceptibility to inflammatory bowel

## Target Details

disease type 14 (IBD14) and systemic lupus erythematosus type 10 (SLEB10).

Molecular Weight: Observed\_MW: Refer to figures  
Calculated\_MW: 56 kDa

UniProt: [Q13568](#)

Pathways: [TLR Signaling, Autophagy](#)

## Application Details

Application Notes: WB 1:500-1:2000, IHC 1:25-1:100, ELISA 1:5000-1:10000

Restrictions: For Research Use only

## Handling

Format: Liquid

Concentration: 0.7 mg/mL

Buffer: PBS with 0.05 % Sodium azide and 40 % Glycerol, pH 7.4

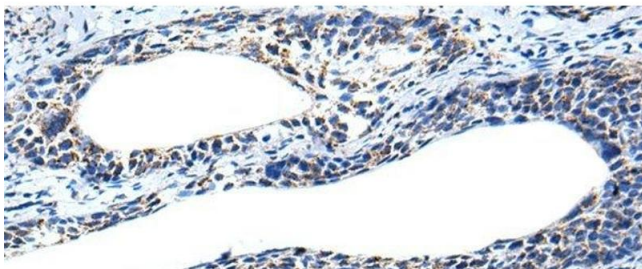
Preservative: Sodium azide

Precaution of Use: This product contains Sodium azide: a POISONOUS AND HAZARDOUS SUBSTANCE which should be handled by trained staff only.

Storage: -20 °C

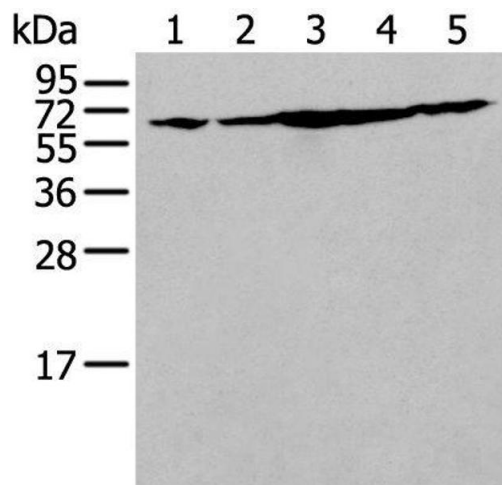
Storage Comment: Store at -20°C. Avoid freeze / thaw cycles.

## Images



### Immunohistochemistry (Paraffin-embedded Sections)

**Image 1.** Immunohistochemistry of paraffin-embedded Human cervical cancer tissue using IRF5 Polyclonal Antibody at dilution of 1:25(x200)



### Western Blotting

**Image 2.** Western blot analysis of NIH/3T3 Hela Jurkat Hepg2 and A549 cell lysates using IRF5 Polyclonal Antibody at dilution of 1:250

### Immunohistochemistry (Paraffin-embedded Sections)

**Image 3.** Immunohistochemistry of paraffin-embedded Human tonsil tissue using IRF5 Polyclonal Antibody at dilution of 1:25(x200)

