

Datasheet for ABIN7248191

anti-ABCA6 antibody**1** Image[Go to Product page](#)

Overview

Quantity:	200 µL
Target:	ABCA6
Reactivity:	Human
Host:	Rabbit
Clonality:	Polyclonal
Conjugate:	This ABCA6 antibody is un-conjugated
Application:	ELISA, Immunohistochemistry (IHC)

Product Details

Immunogen:	Synthetic peptide of human ABCA6
Isotype:	IgG
Characteristics:	Polyclonal Antibody
Purification:	Antigen affinity purification

Target Details

Target:	ABCA6
Alternative Name:	ABCA6 (ABCA6 Products)
Background:	The membrane-associated protein encoded by this gene is a member of the superfamily of ATP-binding cassette (ABC) transporters. ABC proteins transport various molecules across extra- and intracellular membranes. ABC genes are divided into seven distinct subfamilies (ABC1, MDR/TAP, MRP, ALD, OABP, GCN20, and White). This encoded protein is a member of

Target Details

the ABC1 subfamily. Members of the ABC1 subfamily comprise the only major ABC subfamily found exclusively in multicellular eukaryotes. This gene is clustered among 4 other ABC1 family members on 17q24 and may play a role in macrophage lipid homeostasis. ABCA6 (ATP Binding Cassette Subfamily A Member 6) is a Protein Coding gene. Among its related pathways are Transport of glucose and other sugars, bile salts and organic acids, metal ions and amine compounds and CDK-mediated phosphorylation and removal of Cdc6. GO annotations related to this gene include ATPase activity and ATPase activity, coupled to transmembrane movement of substances. An important paralog of this gene is ABCA8.

UniProt: [Q8N139](#)

Application Details

Application Notes: IHC 1:30-1:150, ELISA 1:5000-1:10000

Restrictions: For Research Use only

Handling

Format: Liquid

Concentration: 0.9 mg/mL

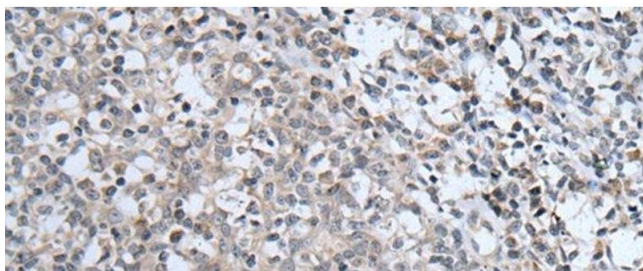
Buffer: PBS with 0.05 % Sodium azide and 40 % Glycerol, pH 7.4

Preservative: Sodium azide

Precaution of Use: This product contains Sodium azide: a POISONOUS AND HAZARDOUS SUBSTANCE which should be handled by trained staff only.

Storage: -20 °C

Storage Comment: Store at -20°C. Avoid freeze / thaw cycles.



Immunohistochemistry (Paraffin-embedded Sections)

Image 1. Immunohistochemistry of paraffin-embedded Human tonsil tissue using ABCA6 Polyclonal Antibody at dilution of 1:40(x200)