

Datasheet for ABIN7248215  
**anti-Contactin 1 antibody**

## 3 Images

[Go to Product page](#)

## Overview

Quantity:	200 µL
Target:	Contactin 1 (CNTN1)
Reactivity:	Human, Mouse, Rat
Host:	Rabbit
Clonality:	Polyclonal
Conjugate:	This Contactin 1 antibody is un-conjugated
Application:	Western Blotting (WB), ELISA, Immunohistochemistry (IHC)

## Product Details

Immunogen:	Synthetic peptide of human CNTN1
Isotype:	IgG
Characteristics:	Polyclonal Antibody
Purification:	Antigen affinity purification

## Target Details

Target:	Contactin 1 (CNTN1)
Alternative Name:	CNTN1 ( <a href="#">CNTN1 Products</a> )
Background:	The protein encoded by this gene is a member of the immunoglobulin superfamily. It is a glycosylphosphatidylinositol (GPI)-anchored neuronal membrane protein that functions as a cell adhesion molecule. It may play a role in the formation of axon connections in the developing nervous system. Multiple alternatively spliced transcript variants encoding different

## Target Details

isoforms have been found for this gene.

Molecular Weight: Observed\_MW: Refer to figures  
Calculated\_MW: 113 kDa

UniProt: [Q12860](#)

## Application Details

Application Notes: WB 1:500-1:2000, IHC 1:25-1:100, ELISA 1:5000-1:10000

Restrictions: For Research Use only

## Handling

Format: Liquid

Concentration: 0.9 mg/mL

Buffer: PBS with 0.05 % Sodium azide and 40 % Glycerol, pH 7.4

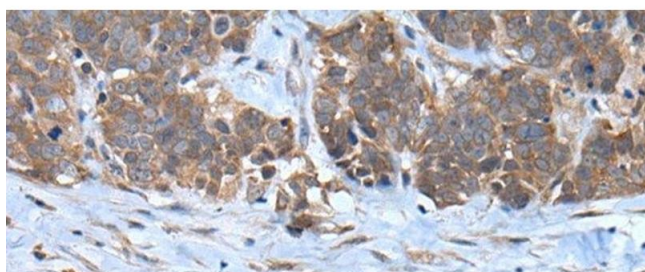
Preservative: Sodium azide

Precaution of Use: This product contains Sodium azide: a POISONOUS AND HAZARDOUS SUBSTANCE which should be handled by trained staff only.

Storage: -20 °C

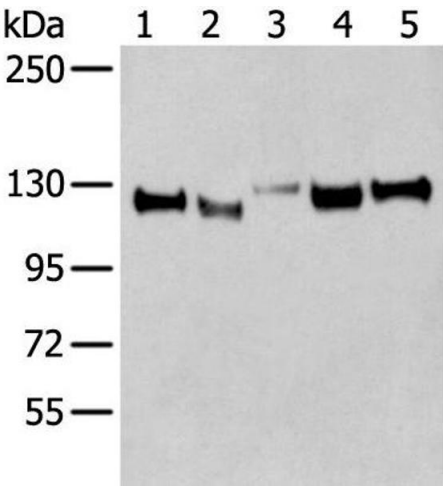
Storage Comment: Store at -20°C. Avoid freeze / thaw cycles.

## Images



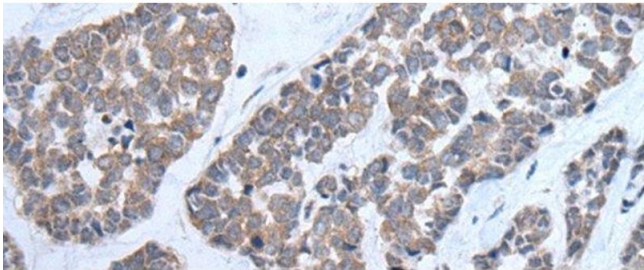
### Immunohistochemistry (Paraffin-embedded Sections)

**Image 1.** Immunohistochemistry of paraffin-embedded Human thyroid cancer tissue using CNTN1 Polyclonal Antibody at dilution of 1:35(x200)



**Western Blotting**

**Image 2.** Western blot analysis of Human cerebella tissue Human cerebrum tissue Human fetal brain tissue Mouse brain tissue Rat brain tissue lysates using CNTN1 Polyclonal Antibody at dilution of 1:350



**Immunohistochemistry (Paraffin-embedded Sections)**

**Image 3.** Immunohistochemistry of paraffin-embedded Human esophagus cancer tissue using CNTN1 Polyclonal Antibody at dilution of 1:35(x200)