



[Go to Product page](#)

Datasheet for ABIN7248218
anti-ZBTB10 antibody

3 Images

Overview

Quantity:	200 µL
Target:	ZBTB10
Reactivity:	Human
Host:	Rabbit
Clonality:	Polyclonal
Conjugate:	This ZBTB10 antibody is un-conjugated
Application:	Western Blotting (WB), ELISA, Immunohistochemistry (IHC)

Product Details

Immunogen:	Synthetic peptide of human ZBTB10
Isotype:	IgG
Characteristics:	Polyclonal Antibody
Purification:	Antigen affinity purification

Target Details

Target:	ZBTB10
Alternative Name:	ZBTB10 (ZBTB10 Products)
Background:	RINZF, also known as ZBTB10 (zinc finger and BTB domain containing protein 10), is a 847 amino acid protein that contains one BTB/POZ domain and two C2H2-type zinc fingers. Localized to the nucleus, RINZF is believed to play a role in transcriptional regulation. Specifically, RINZF is capable of binding to the CACC element of the Gastrin promoter. In this

Target Details

regard, RINZF competes with Sp1 for CACC binding and interferes with Sp1 transactivation, thereby regulating Gastrin gene expression. The rat RINZF protein shares 98 % homology with the human RINZF protein, suggesting that RINZF is a conserved protein. Due to alternative splicing events, two RINZF isoforms exist. In addition, RINZF may be phosphorylated by ATR or ATM upon DNA damage.

Molecular Weight: Observed_MW: Refer to figures
Calculated_MW: 95 kDa

UniProt: [Q96DT7](#)

Application Details

Application Notes: WB 1:500-1:2000, IHC 1:50-1:300, ELISA 1:5000-1:10000

Restrictions: For Research Use only

Handling

Format: Liquid

Concentration: 1.7 mg/mL

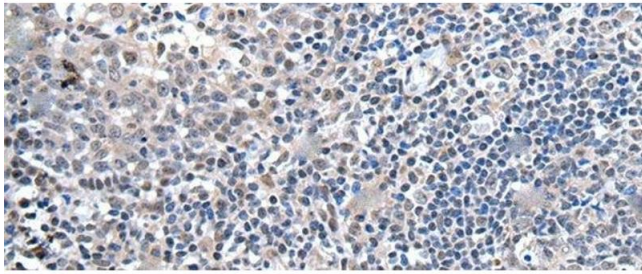
Buffer: PBS with 0.05 % Sodium azide and 40 % Glycerol, pH 7.4

Preservative: Sodium azide

Precaution of Use: This product contains Sodium azide: a POISONOUS AND HAZARDOUS SUBSTANCE which should be handled by trained staff only.

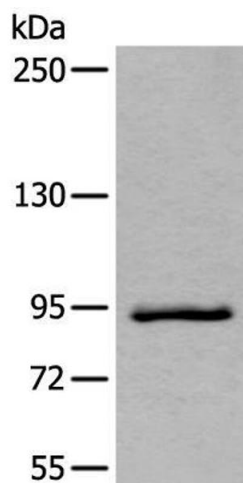
Storage: -20 °C

Storage Comment: Store at -20°C. Avoid freeze / thaw cycles.



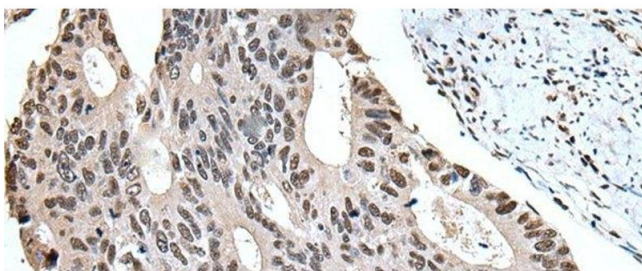
Immunohistochemistry (Paraffin-embedded Sections)

Image 1. Immunohistochemistry of paraffin-embedded Human tonsil tissue using ZBTB10 Polyclonal Antibody at dilution of 1:100(x200)



Western Blotting

Image 2. Western blot analysis of Jurkat cell lysate using ZBTB10 Polyclonal Antibody at dilution of 1:800



Immunohistochemistry (Paraffin-embedded Sections)

Image 3. Immunohistochemistry of paraffin-embedded Human colorectal cancer tissue using ZBTB10 Polyclonal Antibody at dilution of 1:100(x200)