

Datasheet for ABIN7248239

**anti-ATP1B2 antibody****2** Images[Go to Product page](#)

## Overview

Quantity:	200 µL
Target:	ATP1B2
Reactivity:	Human, Mouse, Rat
Host:	Rabbit
Clonality:	Polyclonal
Conjugate:	This ATP1B2 antibody is un-conjugated
Application:	Western Blotting (WB), ELISA, Immunohistochemistry (IHC)

## Product Details

Immunogen:	Synthetic peptide of human ATP1B2
Isotype:	IgG
Characteristics:	Polyclonal Antibody
Purification:	Antigen affinity purification

## Target Details

Target:	ATP1B2
Alternative Name:	ATP1B2 ( <a href="#">ATP1B2 Products</a> )
Background:	The protein encoded by this gene belongs to the family of Na <sup>+</sup> /K <sup>+</sup> and H <sup>+</sup> /K <sup>+</sup> ATPases beta chain proteins, and to the subfamily of Na <sup>+</sup> /K <sup>+</sup> -ATPases. Na <sup>+</sup> /K <sup>+</sup> -ATPase is an integral membrane protein responsible for establishing and maintaining the electrochemical gradients of Na and K ions across the plasma membrane. These gradients are essential for

## Target Details

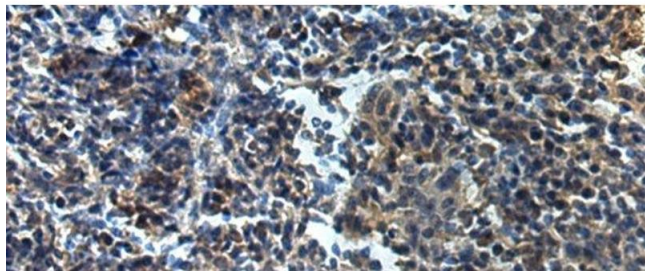
	osmoregulation, for sodium-coupled transport of a variety of organic and inorganic molecules, and for electrical excitability of nerve and muscle. This enzyme is composed of two subunits, a large catalytic subunit (alpha) and a smaller glycoprotein subunit (beta).
Molecular Weight:	Observed_MW: Refer to figures Calculated_MW: 33 kDa
UniProt:	<a href="#">P14415</a>
Pathways:	<a href="#">Thyroid Hormone Synthesis</a>

## Application Details

Application Notes:	WB 1:500-1:2000, IHC 1:50-1:100, ELISA 1:5000-1:10000
Restrictions:	For Research Use only

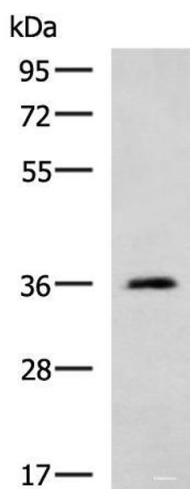
## Handling

Format:	Liquid
Concentration:	0.6 mg/mL
Buffer:	PBS with 0.05 % Sodium azide and 40 % Glycerol, pH 7.4
Preservative:	Sodium azide
Precaution of Use:	This product contains Sodium azide: a POISONOUS AND HAZARDOUS SUBSTANCE which should be handled by trained staff only.
Storage:	-20 °C
Storage Comment:	Store at -20°C. Avoid freeze / thaw cycles.



#### Immunohistochemistry (Paraffin-embedded Sections)

**Image 1.** Immunohistochemistry of paraffin-embedded Human tonsil tissue using ATP1B2 Polyclonal Antibody at dilution of 1:25(x200)



#### Western Blotting

**Image 2.** Western blot analysis of Human cerebella tissue lysate using ATP1B2 Polyclonal Antibody at dilution of 1:650