

Datasheet for ABIN7248251

anti-YY2 antibody[Go to Product page](#)**1** Image

Overview

Quantity:	200 µL
Target:	YY2
Reactivity:	Human, Mouse
Host:	Rabbit
Clonality:	Polyclonal
Conjugate:	This YY2 antibody is un-conjugated
Application:	Western Blotting (WB), ELISA

Product Details

Immunogen:	Synthetic peptide of human YY2
Isotype:	IgG
Characteristics:	Polyclonal Antibody
Purification:	Antigen affinity purification

Target Details

Target:	YY2
Alternative Name:	YY2 (YY2 Products)
Background:	The protein encoded by this gene is a transcription factor that includes several Kruppel-like zinc fingers in its C-terminal region. It possesses both activation and repression domains, and it can therefore have both positive and negative effects on the transcription of target genes. This gene has an intronless coding region, and it appears to have arisen by retrotransposition of the

Target Details

related YY1 transcription factor gene, which is located on chromosome 14.

Molecular Weight: Observed_MW: Refer to figures
Calculated_MW: 41 kDa

UniProt: [O15391](#)

Application Details

Application Notes: WB 1:500-1:2000, ELISA 1:5000-1:10000

Restrictions: For Research Use only

Handling

Format: Liquid

Concentration: 1.7 mg/mL

Buffer: PBS with 0.05 % Sodium azide and 40 % Glycerol, pH 7.4

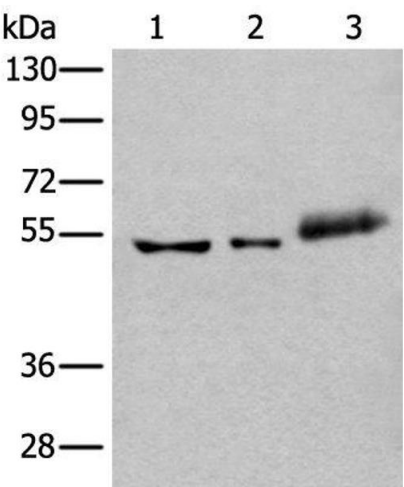
Preservative: Sodium azide

Precaution of Use: This product contains Sodium azide: a POISONOUS AND HAZARDOUS SUBSTANCE which should be handled by trained staff only.

Storage: -20 °C

Storage Comment: Store at -20°C. Avoid freeze / thaw cycles.

Images



Western Blotting

Image 1. Western blot analysis of Hela cell Mouse kidney tissue and Human colorectal cancer tissue lysates using YY2 Polyclonal Antibody at dilution of 1:800