



[Go to Product page](#)

Datasheet for ABIN7248272

## anti-UBAC2 antibody

### 2 Images

#### Overview

Quantity:	200 µL
Target:	UBAC2
Reactivity:	Human, Mouse
Host:	Rabbit
Clonality:	Polyclonal
Conjugate:	This UBAC2 antibody is un-conjugated
Application:	Western Blotting (WB), ELISA, Immunohistochemistry (IHC)

#### Product Details

Immunogen:	Synthetic peptide of human UBAC2
Isotype:	IgG
Characteristics:	Polyclonal Antibody
Purification:	Antigen affinity purification

#### Target Details

Target:	UBAC2
Alternative Name:	UBAC2 ( <a href="#">UBAC2 Products</a> )
Background:	UBAC2 (ubiquitin-associated domain-containing protein 2), also known as PHGDHL1 (phosphoglycerate dehydrogenase-like protein 1), is a 344 amino acid multi-pass membrane protein that contains one UBA domain and is expressed as multiple alternatively spliced isoforms. The gene encoding UBAC2 maps to human chromosome 13, which houses over 400

## Target Details

---

genes, such as BRCA2 and RB1, and comprises nearly 4 % of the human genome. As with most chromosomes, polysomy of part or all of chromosome 13 is deleterious to development and decreases the odds of survival. Trisomy 13, also known as Patau syndrome, is deadly and the few who survive past one year suffer from permanent neurologic defects, difficulty eating and vulnerability to serious respiratory infections.

---

Molecular Weight: Observed\_MW: Refer to figures  
Calculated\_MW: 39 kDa

---

UniProt: [Q8NBM4](#)

## Application Details

---

Application Notes: WB 1:500-1:2000, IHC 1:30-1:150, ELISA 1:5000-1:10000

---

Restrictions: For Research Use only

## Handling

---

Format: Liquid

---

Concentration: 0.9 mg/mL

---

Buffer: PBS with 0.05 % Sodium azide and 40 % Glycerol, pH 7.4

---

Preservative: Sodium azide

---

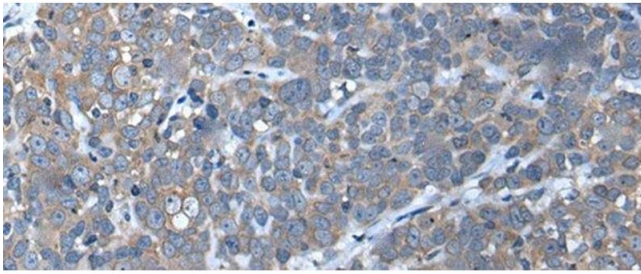
Precaution of Use: This product contains Sodium azide: a POISONOUS AND HAZARDOUS SUBSTANCE which should be handled by trained staff only.

---

Storage: -20 °C

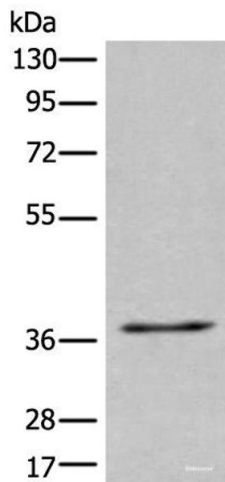
---

Storage Comment: Store at -20°C. Avoid freeze / thaw cycles.



### Immunohistochemistry (Paraffin-embedded Sections)

**Image 1.** Immunohistochemistry of paraffin-embedded Human thyroid cancer tissue using UBAC2 Polyclonal Antibody at dilution of 1:50(x200)



### Western Blotting

**Image 2.** Western blot analysis of 231 cell lysate using UBAC2 Polyclonal Antibody at dilution of 1:400