

Datasheet for ABIN7248335

anti-C14orf2 antibody**3** Images[Go to Product page](#)

Overview

Quantity:	200 µL
Target:	C14orf2
Reactivity:	Human, Mouse
Host:	Rabbit
Clonality:	Polyclonal
Conjugate:	This C14orf2 antibody is un-conjugated
Application:	ELISA, Immunohistochemistry (IHC), Western Blotting (WB)

Product Details

Immunogen:	Synthetic peptide of human C14orf2
Isotype:	IgG
Characteristics:	Polyclonal Antibody
Purification:	Antigen affinity purification

Target Details

Target:	C14orf2
Alternative Name:	C14orf2 (C14orf2 Products)
Background:	C14orf2, also known as MP68, MP68 is a 58 amino acid mitochondrial protein that belongs to the small mitochondrial proteolipid family. The gene encoding MP68 maps to human chromosome 14, which houses over 700 genes and comprises nearly 3.5 % of the human genome. Chromosome 14 encodes the presenilin 1 (PSEN1) gene, which is one of the three key

Target Details

genes associated with the development of Alzheimer's disease (AD). The SERPINA1 gene is also located on chromosome 14 and, when defective, leads to the genetic disorder α 1-antitrypsin deficiency, which is characterized by severe lung complications and liver dysfunction.

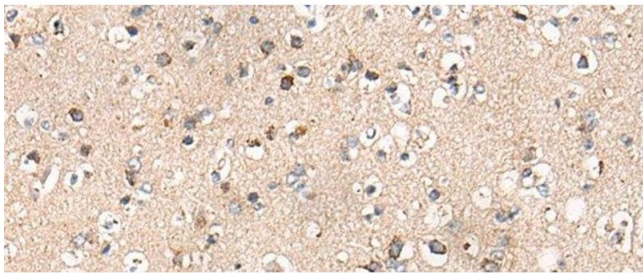
Molecular Weight:	Observed_MW: Refer to figures Calculated_MW: 7 kDa
UniProt:	P56378

Application Details

Application Notes:	WB 1:500-1:2000, IHC 1:40-1:200, ELISA 1:5000-1:10000
Restrictions:	For Research Use only

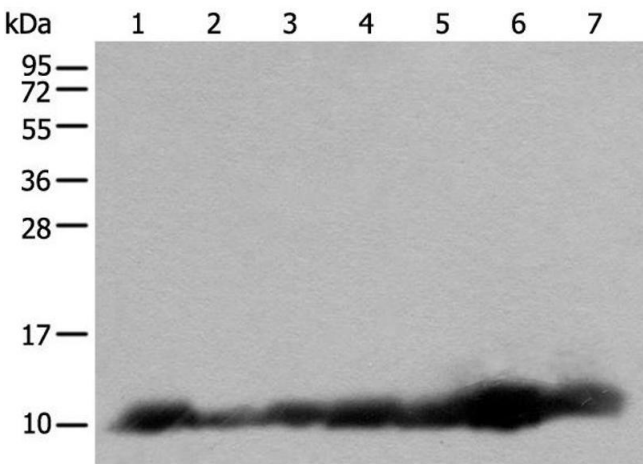
Handling

Format:	Liquid
Concentration:	1.1 mg/mL
Buffer:	PBS with 0.05 % Sodium azide and 40 % Glycerol, pH 7.4
Preservative:	Sodium azide
Precaution of Use:	This product contains Sodium azide: a POISONOUS AND HAZARDOUS SUBSTANCE which should be handled by trained staff only.
Storage:	-20 °C
Storage Comment:	Store at -20°C. Avoid freeze / thaw cycles.



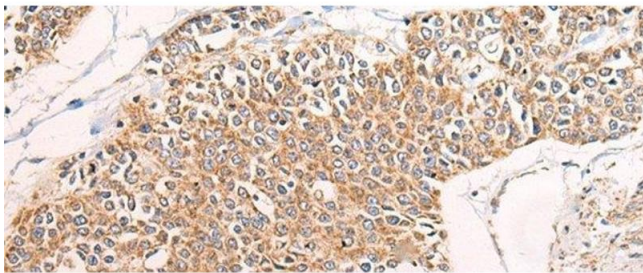
Immunohistochemistry (Paraffin-embedded Sections)

Image 1. Immunohistochemistry of paraffin-embedded Human brain tissue using C14orf2 Polyclonal Antibody at dilution of 1:60(x200)



Western Blotting

Image 2. Western blot analysis of 293T and RAW264.7 cell Human fetal brain tissue Jurkat and 231 cell Human heart tissue Hela cell lysates using C14orf2 Polyclonal Antibody at dilution of 1:600



Immunohistochemistry (Paraffin-embedded Sections)

Image 3. Immunohistochemistry of paraffin-embedded Human prostate cancer tissue using C14orf2 Polyclonal Antibody at dilution of 1:60(x200)