



[Go to Product page](#)

Datasheet for ABIN7248368
anti-CACNG5 antibody

2 Images

Overview

Quantity:	200 µL
Target:	CACNG5
Reactivity:	Human, Rat, Mouse
Host:	Rabbit
Clonality:	Polyclonal
Conjugate:	This CACNG5 antibody is un-conjugated
Application:	Immunohistochemistry (IHC), ELISA

Product Details

Immunogen:	Synthetic peptide of human CACNG5
Isotype:	IgG
Characteristics:	Polyclonal Antibody
Purification:	Antigen affinity purification

Target Details

Target:	CACNG5
Alternative Name:	CACNG5 (CACNG5 Products)
Background:	CACNG5 (Calcium Voltage-Gated Channel Auxiliary Subunit Gamma 5) is a Protein Coding gene. Diseases associated with CACNG5 include Schizophrenia. Among its related pathways are CCR5 Pathway in Macrophages and PEDF Induced Signaling. GO annotations related to this gene include voltage-gated calcium channel activity and ion transmembrane transporter

Target Details

activity. An important paralog of this gene is CACNG7. The protein encoded by this gene is a type II transmembrane AMPA receptor regulatory protein (TARP). TARPs regulate both trafficking and channel gating of the AMPA receptors. This gene is part of a functionally diverse eight-member protein subfamily of the PMP-22/EMP/MP20 family and is located in a cluster with two family members, a type I TARP and a calcium channel gamma subunit. This gene is a susceptibility locus for schizophrenia and bipolar disorder.

UniProt: [Q9UF02](#)

Application Details

Application Notes: IHC 1:40-1:200, ELISA 1:5000-1:10000

Restrictions: For Research Use only

Handling

Format: Liquid

Concentration: 0.5 mg/mL

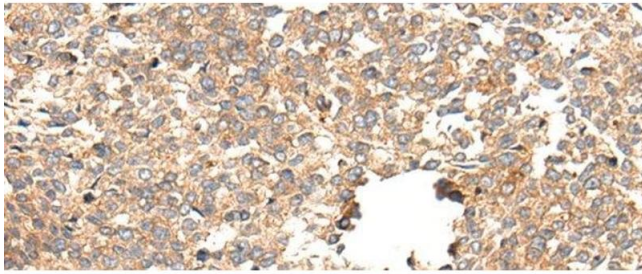
Buffer: PBS with 0.05 % Sodium azide and 40 % Glycerol, pH 7.4

Preservative: Sodium azide

Precaution of Use: This product contains Sodium azide: a POISONOUS AND HAZARDOUS SUBSTANCE which should be handled by trained staff only.

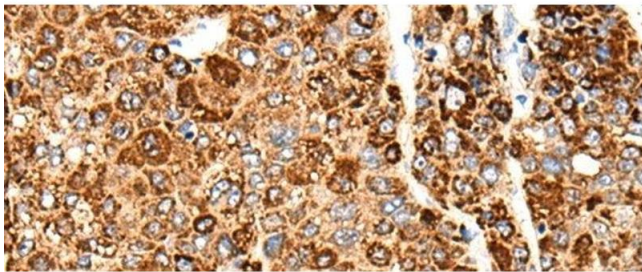
Storage: -20 °C

Storage Comment: Store at -20°C. Avoid freeze / thaw cycles.



Immunohistochemistry (Paraffin-embedded Sections)

Image 1. Immunohistochemistry of paraffin-embedded Human esophagus cancer tissue using CACNG5 Polyclonal Antibody at dilution of 1:50(x200)



Immunohistochemistry (Paraffin-embedded Sections)

Image 2. Immunohistochemistry of paraffin-embedded Human liver cancer tissue using CACNG5 Polyclonal Antibody at dilution of 1:50(x200)