

Datasheet for ABIN7248374

**anti-Calpain 9 antibody****2** Images[Go to Product page](#)

## Overview

Quantity:	200 µL
Target:	Calpain 9 (CAPN9)
Reactivity:	Human, Rat, Mouse
Host:	Rabbit
Clonality:	Polyclonal
Conjugate:	This Calpain 9 antibody is un-conjugated
Application:	ELISA, Immunohistochemistry (IHC)

## Product Details

Immunogen:	Synthetic peptide of human CAPN9
Isotype:	IgG
Characteristics:	Polyclonal Antibody
Purification:	Antigen affinity purification

## Target Details

Target:	Calpain 9 (CAPN9)
Alternative Name:	CAPN9 ( <a href="#">CAPN9 Products</a> )
Background:	Calpains are ubiquitous, well-conserved family of calcium-dependent, cysteine proteases. The calpain proteins are heterodimers consisting of an invariant small subunit and variable large subunits. The large subunit possesses a cysteine protease domain, and both subunits possess calcium-binding domains. Calpains have been implicated in neurodegenerative processes, as

## Target Details

their activation can be triggered by calcium influx and oxidative stress. The protein encoded by this gene is expressed predominantly in stomach and small intestine and may have specialized functions in the digestive tract. This gene is thought to be associated with gastric cancer. Multiple alternatively spliced transcript variants encoding different isoforms have been found for this gene. CAPN9 (Calpain 9) is a Protein Coding gene. Diseases associated with CAPN9 include Gastric Cancer. Among its related pathways are Degradation of the extracellular matrix and Arrhythmogenic right ventricular cardiomyopathy (ARVC). GO annotations related to this gene include calcium ion binding and calcium-dependent cysteine-type endopeptidase activity. An important paralog of this gene is CAPN3.

UniProt: [O14815](#)

## Application Details

Application Notes: IHC 1:30-1:150, ELISA 1:5000-1:10000

Restrictions: For Research Use only

## Handling

Format: Liquid

Concentration: 0.5 mg/mL

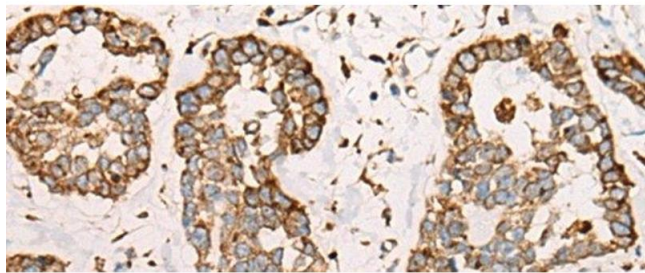
Buffer: PBS with 0.05 % Sodium azide and 40 % Glycerol, pH 7.4

Preservative: Sodium azide

Precaution of Use: This product contains Sodium azide: a POISONOUS AND HAZARDOUS SUBSTANCE which should be handled by trained staff only.

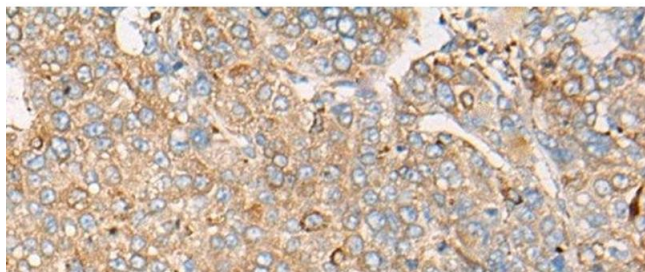
Storage: -20 °C

Storage Comment: Store at -20°C. Avoid freeze / thaw cycles.



#### Immunohistochemistry (Paraffin-embedded Sections)

**Image 1.** Immunohistochemistry of paraffin-embedded Human esophagus cancer tissue using CAPN9 Polyclonal Antibody at dilution of 1:45(x200)



#### Immunohistochemistry (Paraffin-embedded Sections)

**Image 2.** Immunohistochemistry of paraffin-embedded Human liver cancer tissue using CAPN9 Polyclonal Antibody at dilution of 1:45(x200)