

Datasheet for ABIN7248380

anti-CPD antibody[Go to Product page](#)**1** Image

Overview

Quantity:	200 µL
Target:	CPD
Reactivity:	Human
Host:	Rabbit
Clonality:	Polyclonal
Conjugate:	This CPD antibody is un-conjugated
Application:	ELISA, Immunohistochemistry (IHC)

Product Details

Immunogen:	Synthetic peptide of human CPD
Isotype:	IgG
Characteristics:	Polyclonal Antibody
Purification:	Antigen affinity purification

Target Details

Target:	CPD
Alternative Name:	CPD (CPD Products)
Background:	The metallopeptidase family of enzymes is divided into 2 subfamilies based on sequence similarities. The pancreatic carboxypeptidase-like and the regulatory B-type carboxypeptidase subfamilies. Carboxypeptidase D has been identified as a regulatory B-type carboxypeptidase. CPD is a homolog of duck gp180, a hepatitis B virus-binding protein.

Target Details

Transcript variants utilizing alternative polyadenylation signals exist for this gene.

UniProt: [O75976](#)

Pathways: [Synaptic Membrane](#), [Regulation of G-Protein Coupled Receptor Protein Signaling](#)

Application Details

Application Notes: IHC 1:40-1:200, ELISA 1:5000-1:10000

Restrictions: For Research Use only

Handling

Format: Liquid

Concentration: 1 mg/mL

Buffer: PBS with 0.05 % Sodium azide and 40 % Glycerol, pH 7.4

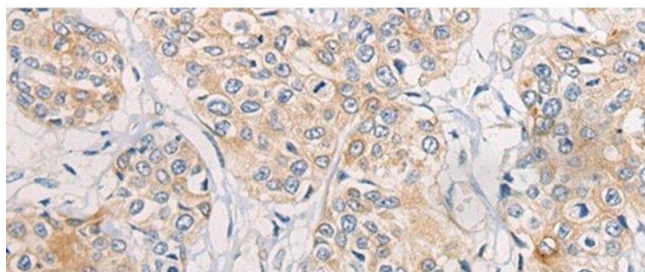
Preservative: Sodium azide

Precaution of Use: This product contains Sodium azide: a POISONOUS AND HAZARDOUS SUBSTANCE which should be handled by trained staff only.

Storage: -20 °C

Storage Comment: Store at -20°C. Avoid freeze / thaw cycles.

Images



Immunohistochemistry (Paraffin-embedded Sections)

Image 1. Immunohistochemistry of paraffin-embedded Human prostate cancer tissue using CPD Polyclonal Antibody at dilution of 1:70(x200)