



[Go to Product page](#)

Datasheet for ABIN7248395  
**anti-CCDC85C antibody**

2 Images

Overview

Quantity:	200 µL
Target:	CCDC85C
Reactivity:	Human, Mouse
Host:	Rabbit
Clonality:	Polyclonal
Conjugate:	This CCDC85C antibody is un-conjugated
Application:	Western Blotting (WB), Immunohistochemistry (IHC), ELISA

Product Details

Immunogen:	Synthetic peptide of human CCDC85C
Isotype:	IgG
Characteristics:	Polyclonal Antibody
Purification:	Antigen affinity purification

Target Details

Target:	CCDC85C
Alternative Name:	CCDC85C ( <a href="#">CCDC85C Products</a> )
Background:	CCDC85C may play an important role in cortical development, especially in the maintenance of radial glia.
Molecular Weight:	Observed_MW: Refer to figures

## Target Details

Calculated\_MW: 45 kDa

UniProt: [A6NKD9](#)

## Application Details

Application Notes: WB 1:500-1:2000, IHC 1:30-1:150, ELISA 1:5000-1:10000

Restrictions: For Research Use only

## Handling

Format: Liquid

Concentration: 0.7 mg/mL

Buffer: PBS with 0.05 % Sodium azide and 40 % Glycerol, pH 7.4

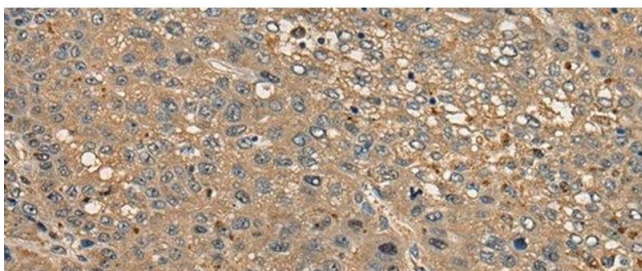
Preservative: Sodium azide

Precaution of Use: This product contains Sodium azide: a POISONOUS AND HAZARDOUS SUBSTANCE which should be handled by trained staff only.

Storage: -20 °C

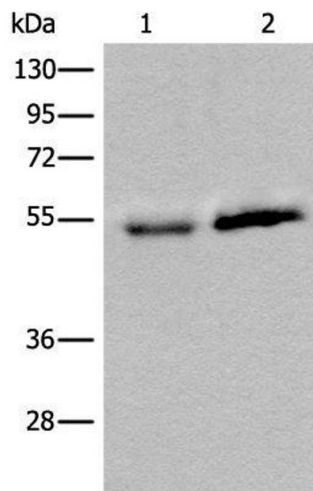
Storage Comment: Store at -20°C. Avoid freeze / thaw cycles.

## Images



### Immunohistochemistry (Paraffin-embedded Sections)

**Image 1.** Immunohistochemistry of paraffin-embedded Human liver cancer tissue using CCDC85C Polyclonal Antibody at dilution of 1:30(x200)



### Western Blotting

**Image 2.** Western blot analysis of Human fetal intestines tissue and Human breast cancer tissue lysates using CCDC85C Polyclonal Antibody at dilution of 1:400