

Datasheet for ABIN7248404  
**anti-CDC42BPA antibody**[Go to Product page](#)

## 2 Images

## Overview

Quantity:	200 µL
Target:	CDC42BPA
Reactivity:	Human, Mouse, Rat
Host:	Rabbit
Clonality:	Polyclonal
Conjugate:	This CDC42BPA antibody is un-conjugated
Application:	Western Blotting (WB), ELISA, Immunohistochemistry (IHC)

## Product Details

Immunogen:	Synthetic peptide of human CDC42BPA
Isotype:	IgG
Characteristics:	Polyclonal Antibody
Purification:	Antigen affinity purification

## Target Details

Target:	CDC42BPA
Alternative Name:	CDC42BPA ( <a href="#">CDC42BPA Products</a> )
Background:	<p>The protein encoded by this gene is a member of the Serine/Threonine protein kinase family. This kinase contains multiple functional domains. Its kinase domain is highly similar to that of the myotonic dystrophy protein kinase (DMPK). This kinase also contains a Rac interactive binding (CRIB) domain, and has been shown to bind CDC42. It may function as a CDC42</p>

## Target Details

downstream effector mediating CDC42 induced peripheral actin formation, and promoting cytoskeletal reorganization. Multiple alternatively spliced transcript variants have been described, and the full-length nature of two of them has been reported.

Molecular Weight: Observed\_MW: Refer to figures  
Calculated\_MW: 197 kDa

UniProt: [Q5VT25](#)

## Application Details

Application Notes: WB 1:500-1:2000, IHC 1:30-1:150, ELISA 1:5000-1:10000

Restrictions: For Research Use only

## Handling

Format: Liquid

Concentration: 1 mg/mL

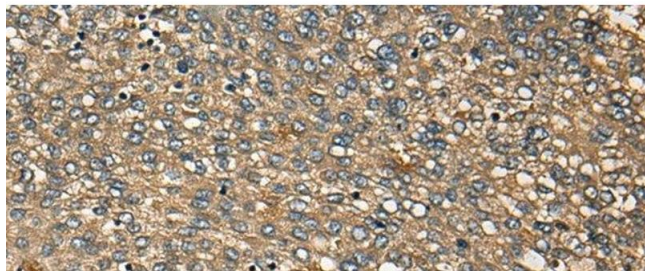
Buffer: PBS with 0.05 % Sodium azide and 40 % Glycerol, pH 7.4

Preservative: Sodium azide

Precaution of Use: This product contains Sodium azide: a POISONOUS AND HAZARDOUS SUBSTANCE which should be handled by trained staff only.

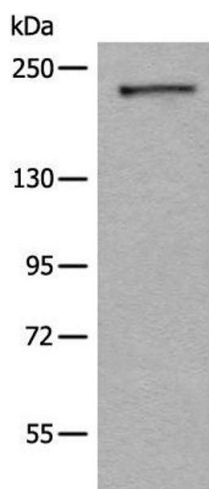
Storage: -20 °C

Storage Comment: Store at -20°C. Avoid freeze / thaw cycles.



#### Immunohistochemistry (Paraffin-embedded Sections)

**Image 1.** Immunohistochemistry of paraffin-embedded Human liver cancer tissue using CDC42BPA Polyclonal Antibody at dilution of 1:45(x200)



#### Western Blotting

**Image 2.** Western blot analysis of A172 cell lysate using CDC42BPA Polyclonal Antibody at dilution of 1:600