

Datasheet for ABIN7248440

**anti-CITED4 antibody**[Go to Product page](#)**1** Image

## Overview

Quantity:	200 µL
Target:	CITED4
Reactivity:	Human
Host:	Rabbit
Clonality:	Polyclonal
Conjugate:	This CITED4 antibody is un-conjugated
Application:	ELISA, Immunohistochemistry (IHC)

## Product Details

Immunogen:	Synthetic peptide of human CITED4
Isotype:	IgG
Characteristics:	Polyclonal Antibody
Purification:	Antigen affinity purification

## Target Details

Target:	CITED4
Alternative Name:	CITED4 ( <a href="#">CITED4 Products</a> )
Background:	The protein encoded by this intronless gene belongs to the CITED family of transcriptional coactivators that bind to several proteins, including CREB-binding protein (CBP) and p300, via a conserved 32 aa C-terminal motif, and regulate gene transcription. This protein also interacts with transcription factor AP2 (TFAP2), and thus may function as a co-activator for TFAP2.

## Target Details

Hypermethylation and transcriptional downregulation of this gene has been observed in oligodendroglial tumors with deletions of chromosomal arms 1p and 19q, and associated with longer recurrence-free and overall survival of patients with oligodendroglial tumors.

UniProt: [Q96RK1](#)

## Application Details

Application Notes: IHC 1:30-1:150, ELISA 1:5000-1:10000

Restrictions: For Research Use only

## Handling

Format: Liquid

Concentration: 0.9 mg/mL

Buffer: PBS with 0.05 % Sodium azide and 40 % Glycerol, pH 7.4

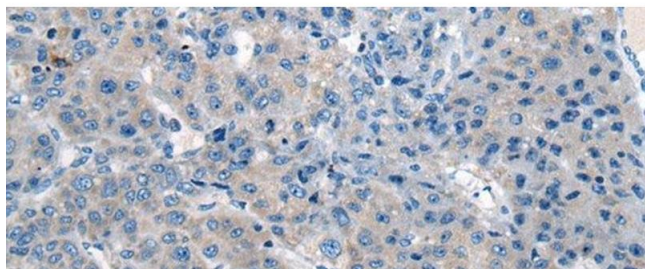
Preservative: Sodium azide

Precaution of Use: This product contains Sodium azide: a POISONOUS AND HAZARDOUS SUBSTANCE which should be handled by trained staff only.

Storage: -20 °C

Storage Comment: Store at -20°C. Avoid freeze / thaw cycles.

## Images



### Immunohistochemistry (Paraffin-embedded Sections)

**Image 1.** Immunohistochemistry of paraffin-embedded Human liver cancer tissue using CITED4 Polyclonal Antibody at dilution of 1:65(x200)