

Datasheet for ABIN7248488

anti-HIPK2 antibody**3** Images[Go to Product page](#)

Overview

| | |
|--------------|--|
| Quantity: | 200 µL |
| Target: | HIPK2 |
| Reactivity: | Human, Mouse |
| Host: | Rabbit |
| Clonality: | Polyclonal |
| Conjugate: | This HIPK2 antibody is un-conjugated |
| Application: | ELISA, Western Blotting (WB), Immunohistochemistry (IHC) |

Product Details

| | |
|------------------|----------------------------------|
| Immunogen: | Synthetic peptide of human HIPK2 |
| Isotype: | IgG |
| Characteristics: | Polyclonal Antibody |
| Purification: | Antigen affinity purification |

Target Details

| | |
|-------------------|--|
| Target: | HIPK2 |
| Alternative Name: | HIPK2 (HIPK2 Products) |
| Background: | This gene encodes a conserved serine/threonine kinase that is a member of the homeodomain-interacting protein kinase family. The encoded protein interacts with homeodomain transcription factors and many other transcription factors such as p53, and can function as both a corepressor and a coactivator depending on the transcription factor and its subcellular |

Target Details

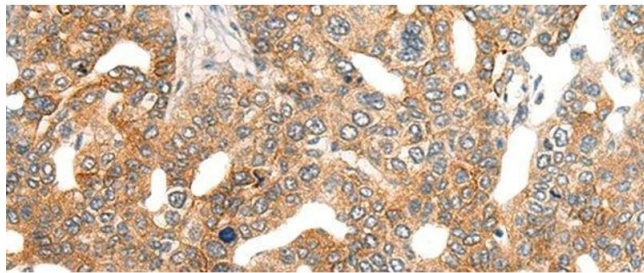
| | |
|-------------------|---|
| | localization. Multiple transcript variants encoding different isoforms have been found for this gene. |
| Molecular Weight: | Observed_MW: Refer to figures Calculated_MW: 131 kDa |
| UniProt: | Q9H2X6 |
| Pathways: | Cell Division Cycle |

Application Details

| | |
|--------------------|---|
| Application Notes: | WB 1:500-1:2000, IHC 1:30-1:150, ELISA 1:5000-1:10000 |
| Restrictions: | For Research Use only |

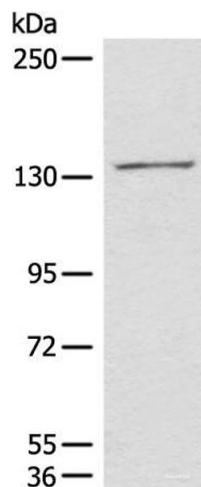
Handling

| | |
|--------------------|--|
| Format: | Liquid |
| Concentration: | 1.1 mg/mL |
| Buffer: | PBS with 0.05 % Sodium azide and 40 % Glycerol, pH 7.4 |
| Preservative: | Sodium azide |
| Precaution of Use: | This product contains Sodium azide: a POISONOUS AND HAZARDOUS SUBSTANCE which should be handled by trained staff only. |
| Storage: | -20 °C |
| Storage Comment: | Store at -20°C. Avoid freeze / thaw cycles. |



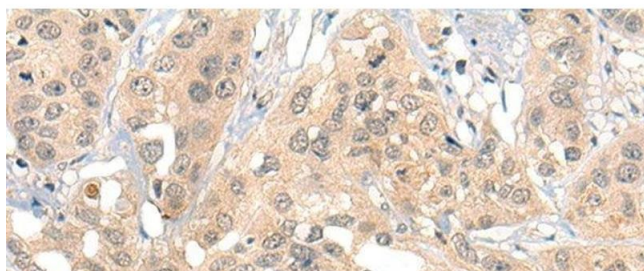
Immunohistochemistry (Paraffin-embedded Sections)

Image 1. Immunohistochemistry of paraffin-embedded Human liver cancer tissue using HIPK2 Polyclonal Antibody at dilution of 1:40(x200)



Western Blotting

Image 2. Western blot analysis of 231 cell lysate using HIPK2 Polyclonal Antibody at dilution of 1:850



Immunohistochemistry (Paraffin-embedded Sections)

Image 3. Immunohistochemistry of paraffin-embedded Human esophagus cancer tissue using HIPK2 Polyclonal Antibody at dilution of 1:40(x200)