

Datasheet for ABIN7248521

anti-CREG1 antibody[Go to Product page](#)**1** Image

Overview

Quantity:	200 µL
Target:	CREG1
Reactivity:	Human, Mouse
Host:	Rabbit
Clonality:	Polyclonal
Conjugate:	This CREG1 antibody is un-conjugated
Application:	Western Blotting (WB), ELISA

Product Details

Immunogen:	Synthetic peptide of human CREG1
Isotype:	IgG
Characteristics:	Polyclonal Antibody
Purification:	Antigen affinity purification

Target Details

Target:	CREG1
Alternative Name:	CREG1 (CREG1 Products)
Background:	The adenovirus E1A protein both activates and represses gene expression to promote cellular proliferation and inhibit differentiation. The protein encoded by this gene antagonizes transcriptional activation and cellular transformation by E1A. This protein shares limited sequence similarity with E1A and binds both the general transcription factor TBP and the tumor

Target Details

	suppressor pRb in vitro. This gene may contribute to the transcriptional control of cell growth and differentiation.
Molecular Weight:	Observed_MW: Refer to figures Calculated_MW: 24 kDa
UniProt:	075629

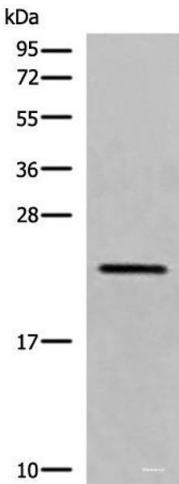
Application Details

Application Notes:	WB 1:500-1:2000, ELISA 1:5000-1:10000
Restrictions:	For Research Use only

Handling

Format:	Liquid
Concentration:	0.9 mg/mL
Buffer:	PBS with 0.05 % Sodium azide and 40 % Glycerol, pH 7.4
Preservative:	Sodium azide
Precaution of Use:	This product contains Sodium azide: a POISONOUS AND HAZARDOUS SUBSTANCE which should be handled by trained staff only.
Storage:	-20 °C
Storage Comment:	Store at -20°C. Avoid freeze / thaw cycles.

Images



Western Blotting

Image 1. Western blot analysis of RAW264.7 cell lysate using CREG1 Polyclonal Antibody at dilution of 1:550