

Datasheet for ABIN7248569

anti-IL-7 antibody**2** Images[Go to Product page](#)

Overview

Quantity:	200 µL
Target:	IL-7 (IL7)
Reactivity:	Human
Host:	Rabbit
Clonality:	Polyclonal
Conjugate:	This IL-7 antibody is un-conjugated
Application:	ELISA, Immunohistochemistry (IHC)

Product Details

Immunogen:	Synthetic peptide of human IL7
Isotype:	IgG
Characteristics:	Polyclonal Antibody
Purification:	Antigen affinity purification

Target Details

Target:	IL-7 (IL7)
Alternative Name:	IL7 (IL7 Products)
Background:	Interleukin-7 (IL7) is a cytokine important for B and T cell development. IL7 plays an active role in the development, survival, maintaining and restoring homeostasis of mature T lymphocytes. It is also a key regulator of the commitment, survival, proliferation and maturation of B cells during development. Furthermore, IL7 can improve the antiviral function and expansion of natural killer

Target Details

(NK) cells and regulate the development and differentiation of dendritic cells. IL7 has also been reported as a regulator of the development of central nervous system and myogenesis and skeletal muscle cell migration.

UniProt: [P13232](#)

Pathways: [JAK-STAT Signaling](#)

Application Details

Application Notes: IHC 1:30-1:150, ELISA 1:5000-1:10000

Restrictions: For Research Use only

Handling

Format: Liquid

Concentration: 0.84 mg/mL

Buffer: PBS with 0.05 % Sodium azide and 40 % Glycerol, pH 7.4

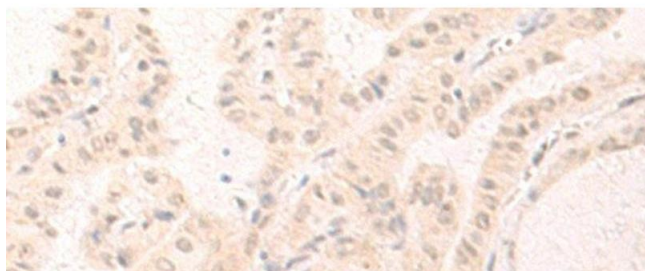
Preservative: Sodium azide

Precaution of Use: This product contains Sodium azide: a POISONOUS AND HAZARDOUS SUBSTANCE which should be handled by trained staff only.

Storage: -20 °C

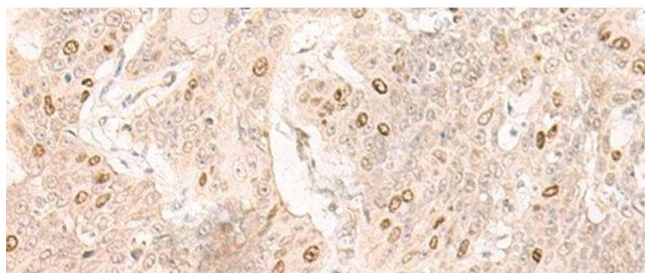
Storage Comment: Store at -20°C. Avoid freeze / thaw cycles.

Images



Immunohistochemistry (Paraffin-embedded Sections)

Image 1. Immunohistochemistry of paraffin-embedded Human thyroid cancer tissue using IL7 Polyclonal Antibody at dilution of 1:30(x200)



Immunohistochemistry (Paraffin-embedded Sections)

Image 2. Immunohistochemistry of paraffin-embedded Human esophagus cancer tissue using IL7 Polyclonal Antibody at dilution of 1:30(x200)