

Datasheet for ABIN7248665

anti-FGF11 antibody[Go to Product page](#)**1** Image

Overview

Quantity:	200 µL
Target:	FGF11
Reactivity:	Human, Mouse
Host:	Rabbit
Clonality:	Polyclonal
Conjugate:	This FGF11 antibody is un-conjugated
Application:	Immunohistochemistry (IHC), ELISA

Product Details

Immunogen:	Synthetic peptide of human FGF11
Isotype:	IgG
Characteristics:	Polyclonal Antibody
Purification:	Antigen affinity purification

Target Details

Target:	FGF11
Alternative Name:	FGF11 (FGF11 Products)
Background:	The protein encoded by this gene is a member of the fibroblast growth factor (FGF) family. FGF family members possess broad mitogenic and cell survival activities, and are involved in a variety of biological processes, including embryonic development, cell growth, morphogenesis, tissue repair, tumor growth and invasion. The function of this gene has not yet been

Target Details

determined. The expression pattern of the mouse homolog implies a role in nervous system development. Alternative splicing results in multiple transcript variants. FGF11 (Fibroblast Growth Factor 11) is a Protein Coding gene. Among its related pathways are GPCR Pathway and Phospholipase-C Pathway. GO annotations related to this gene include growth factor activity. An important paralog of this gene is FGF12.

UniProt: [Q92914](#)

Application Details

Application Notes: IHC 1:25-1:50, ELISA 1:5000-1:10000

Restrictions: For Research Use only

Handling

Format: Liquid

Concentration: 1.38 mg/mL

Buffer: PBS with 0.05 % Sodium azide and 40 % Glycerol, pH 7.4

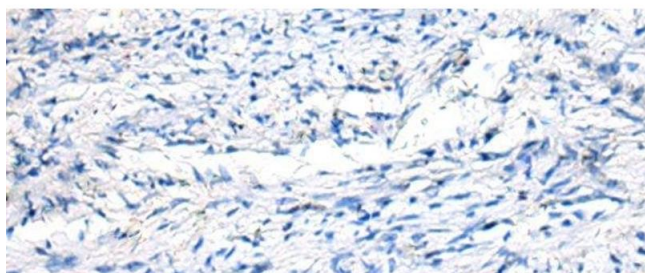
Preservative: Sodium azide

Precaution of Use: This product contains Sodium azide: a POISONOUS AND HAZARDOUS SUBSTANCE which should be handled by trained staff only.

Storage: -20 °C

Storage Comment: Store at -20°C. Avoid freeze / thaw cycles.

Images



Immunohistochemistry (Paraffin-embedded Sections)

Image 1. Immunohistochemistry of paraffin-embedded Human ovarian cancer tissue using FGF11 Polyclonal Antibody at dilution of 1:50(x200)