



Datasheet for ABIN7248695

anti-FOLR1 antibody



[Go to Product page](#)

1 Image

Overview

Quantity:	200 µL
Target:	FOLR1
Reactivity:	Human, Mouse
Host:	Rabbit
Clonality:	Polyclonal
Conjugate:	This FOLR1 antibody is un-conjugated
Application:	ELISA, Immunohistochemistry (IHC)

Product Details

Immunogen:	Synthetic peptide of human FOLR1
Isotype:	IgG
Characteristics:	Polyclonal Antibody
Purification:	Antigen affinity purification

Target Details

Target:	FOLR1
Alternative Name:	FOLR1 (FOLR1 Products)
Background:	Folate receptor 1 (FOLR1), also known as folate receptor alpha or adult folate-binding protein (FBP), is a 38- kDa glycoprotein belonging to the folate receptor family. The receptor binds to folate and reduced folic acid derivatives and mediates delivery of 5-methyltetrahydrofolate to the interior of cells. FOLR1 is a secreted protein that either anchors to membranes via a

Target Details

glycosyl-phosphatidylinositol linkage or exists in a soluble form. FOLR1 expression is often limited to the apical surfaces of epithelium in the lung,kidney and choroid plexus but is differentially overexpressed in a variety of solid tumors such as ovarian cancer,non-small cell lung cancer,breast cancer,kidney cancer and high-grade osteosarcoma .

UniProt: [P15328](#)

Pathways: [Dicarboxylic Acid Transport](#)

Application Details

Application Notes: IHC 1:40-1:200, ELISA 1:5000-1:10000

Restrictions: For Research Use only

Handling

Format: Liquid

Concentration: 2.28 mg/mL

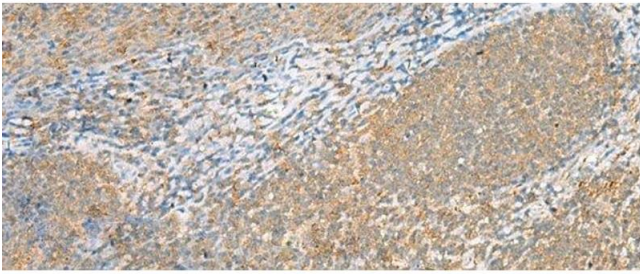
Buffer: PBS with 0.05 % Sodium azide and 40 % Glycerol, pH 7.4

Preservative: Sodium azide

Precaution of Use: This product contains Sodium azide: a POISONOUS AND HAZARDOUS SUBSTANCE which should be handled by trained staff only.

Storage: -20 °C

Storage Comment: Store at -20°C. Avoid freeze / thaw cycles.



Immunohistochemistry (Paraffin-embedded Sections)

Image 1. Immunohistochemistry of paraffin-embedded Human tonsil tissue using FOLR1 Polyclonal Antibody at dilution of 1:80(x200)