



[Go to Product page](#)

Datasheet for ABIN7248701

anti-FOXI1 antibody

3 Images

Overview

Quantity:	200 µL
Target:	FOXI1
Reactivity:	Human
Host:	Rabbit
Clonality:	Polyclonal
Conjugate:	This FOXI1 antibody is un-conjugated
Application:	Western Blotting (WB), ELISA, Immunohistochemistry (IHC)

Product Details

Immunogen:	Synthetic peptide of human FOXI1
Isotype:	IgG
Characteristics:	Polyclonal Antibody
Purification:	Antigen affinity purification

Target Details

Target:	FOXI1
Alternative Name:	FOXI1 (FOXI1 Products)
Background:	This gene belongs to the forkhead family of transcription factors, which is characterized by a distinct forkhead domain. This gene may play an important role in the development of the cochlea and vestibulum, as well as in embryogenesis. The encoded protein has been found to be required for the transcription of four subunits of a proton pump found in the inner ear, the

Target Details

kidney, and the epididymis. Mutations in this gene have been associated with deafness, autosomal recessive 4.

Molecular Weight: Observed_MW: Refer to figures
Calculated_MW: 41 kDa

UniProt: [Q12951](#)

Application Details

Application Notes: WB 1:500-1:2000, IHC 1:50-1:200, ELISA 1:5000-1:10000

Restrictions: For Research Use only

Handling

Format: Liquid

Concentration: 1.62 mg/mL

Buffer: PBS with 0.05 % Sodium azide and 40 % Glycerol, pH 7.4

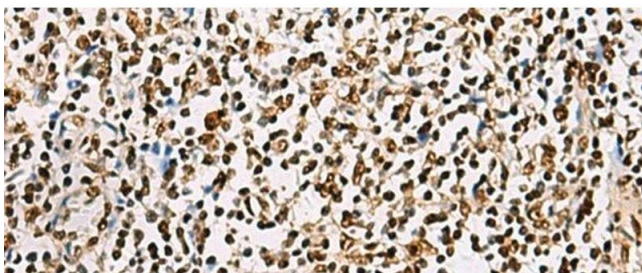
Preservative: Sodium azide

Precaution of Use: This product contains Sodium azide: a POISONOUS AND HAZARDOUS SUBSTANCE which should be handled by trained staff only.

Storage: -20 °C

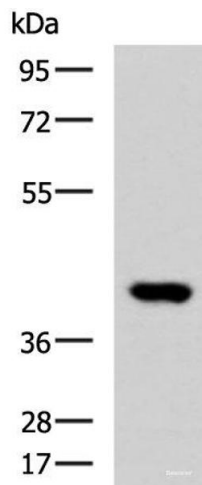
Storage Comment: Store at -20°C. Avoid freeze / thaw cycles.

Images



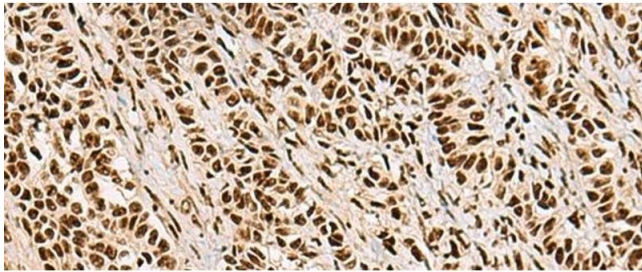
Immunohistochemistry (Paraffin-embedded Sections)

Image 1. Immunohistochemistry of paraffin-embedded Human tonsil tissue using FOX11 Polyclonal Antibody at dilution of 1:55(x200)



Western Blotting

Image 2. Western blot analysis of Human heart tissue lysate using FOXI1 Polyclonal Antibody at dilution of 1:800



Immunohistochemistry (Paraffin-embedded Sections)

Image 3. Immunohistochemistry of paraffin-embedded Human ovarian cancer tissue using FOXI1 Polyclonal Antibody at dilution of 1:55(x200)