



[Go to Product page](#)

Datasheet for ABIN7248776

anti-GIPC1 antibody

2 Images

Overview

Quantity:	200 µL
Target:	GIPC1
Reactivity:	Human, Mouse, Rat
Host:	Rabbit
Clonality:	Polyclonal
Conjugate:	This GIPC1 antibody is un-conjugated
Application:	Western Blotting (WB), ELISA, Immunohistochemistry (IHC)

Product Details

Immunogen:	Synthetic peptide of human GIPC1
Isotype:	IgG
Characteristics:	Polyclonal Antibody
Purification:	Antigen affinity purification

Target Details

Target:	GIPC1
Alternative Name:	GIPC1 (GIPC1 Products)
Background:	GIPC1 is a scaffolding protein that regulates cell surface receptor expression and trafficking.
Molecular Weight:	Observed_MW: Refer to figures Calculated_MW: 36 kDa

Target Details

UniProt: [O14908](#)

Pathways: [Dicarboxylic Acid Transport](#)

Application Details

Application Notes: WB 1:500-1:2000, IHC 1:40-1:200, ELISA 1:5000-1:10000

Restrictions: For Research Use only

Handling

Format: Liquid

Concentration: 1.38 mg/mL

Buffer: PBS with 0.05 % Sodium azide and 40 % Glycerol, pH 7.4

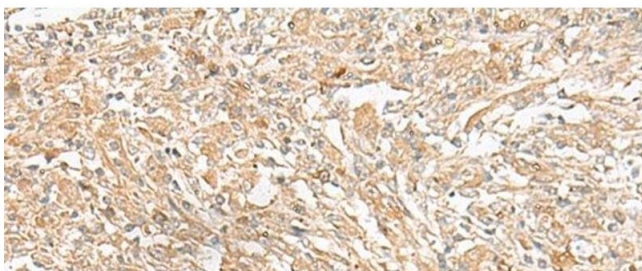
Preservative: Sodium azide

Precaution of Use: This product contains Sodium azide: a POISONOUS AND HAZARDOUS SUBSTANCE which should be handled by trained staff only.

Storage: -20 °C

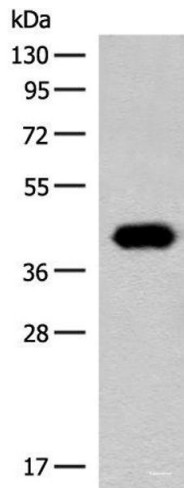
Storage Comment: Store at -20°C. Avoid freeze / thaw cycles.

Images



Immunohistochemistry (Paraffin-embedded Sections)

Image 1. Immunohistochemistry of paraffin-embedded Human liver cancer tissue using GIPC1 Polyclonal Antibody at dilution of 1:50(x200)



Western Blotting

Image 2. Western blot analysis of HeLa cell lysate using GIPC1 Polyclonal Antibody at dilution of 1:400