

Datasheet for ABIN7248908

anti-MOB2 antibody[Go to Product page](#)**1** Image

Overview

Quantity:	200 µL
Target:	MOB2
Reactivity:	Human, Mouse
Host:	Rabbit
Clonality:	Polyclonal
Conjugate:	This MOB2 antibody is un-conjugated
Application:	ELISA, Immunohistochemistry (IHC)

Product Details

Immunogen:	Synthetic peptide of human MOB2
Isotype:	IgG
Characteristics:	Polyclonal Antibody
Purification:	Antigen affinity purification

Target Details

Target:	MOB2
Alternative Name:	MOB2 (MOB2 Products)
Background:	MOB2 (Mps one binder kinase activator-like 2), also known as HCCA2 (Hepatocellular carcinoma-associated gene 2), is a 467 amino acid protein that belongs to the MOB1/phocein family. MOB2 is expressed in lung, spleen, brain, and fetal liver. It is highly expressed in hepatocellular carcinoma. MOB2 is localized in the perinuclear region of the cytoplasm in liver

Target Details

cancer tissues and colocalizes with MAD2L2 in the nucleus of Hela cells. MOB2 is characterized by two N-glycosylation sites, six N-myristoylation sites, two Src homology 3 (SH3), and several phosphorylation motifs which indicate that this protein may play a role in an intracellular signal transduction cascade. MOB2 binds to and regulates the autophosphorylation of the related human serine/threonine kinase 38 (NDR1) and serine/threonine kinase 38L(NDR2). It has been shown that MOB2 plays a critical role in cell cycle regulation. Overexpression of the protein during the G0/G1 phase inhibits cell proliferation causing cell cycle arrest. Stimulates the autophosphorylation and kinase activity of STK38 and STK38L.

UniProt: [Q70IA6](#)

Application Details

Application Notes: IHC 1:40-1:200, ELISA 1:5000-1:10000

Restrictions: For Research Use only

Handling

Format: Liquid

Concentration: 1.08 mg/mL

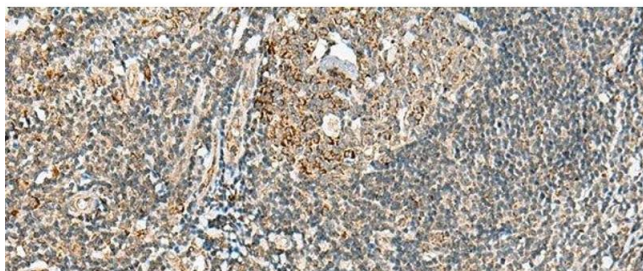
Buffer: PBS with 0.05 % Sodium azide and 40 % Glycerol, pH 7.4

Preservative: Sodium azide

Precaution of Use: This product contains Sodium azide: a POISONOUS AND HAZARDOUS SUBSTANCE which should be handled by trained staff only.

Storage: -20 °C

Storage Comment: Store at -20°C. Avoid freeze / thaw cycles.



Immunohistochemistry (Paraffin-embedded Sections)

Image 1. Immunohistochemistry of paraffin-embedded Human tonsil tissue using MOB2 Polyclonal Antibody at dilution of 1:40(x200)