

Datasheet for ABIN7248974

anti-Mtfp1 antibody

3 Images

[Go to Product page](#)

Overview

Quantity:	200 µL
Target:	Mtfp1
Reactivity:	Human, Mouse
Host:	Rabbit
Clonality:	Polyclonal
Conjugate:	This Mtfp1 antibody is un-conjugated
Application:	Western Blotting (WB), Immunohistochemistry (IHC), ELISA

Product Details

Immunogen:	Recombinant protein of human MTFP1
Isotype:	IgG
Characteristics:	Polyclonal Antibody
Purification:	Affinity purification

Target Details

Target:	Mtfp1
Alternative Name:	MTFP1 (Mtfp1 Products)
Background:	MTP18 (mitochondrial 18 kDa protein), also known as HSPC242, is a 166 amino acid protein essential for cell viability. MTP18 may also have a role in maintaining the integrity of the mitochondrial network. Localized to the mitochondrion, expression of MTP18 is regulated by the PI 3-kinase pathway. Loss of function of MTP18 results in the release of cytochrome c, which

Target Details

subsequently activates the caspase cascade and leads to apoptosis.

Molecular Weight: 18 kDa

UniProt: [Q9UDX5](#)

Application Details

Application Notes: WB 1:500-1:2000, IHC 1:50-1:200

Restrictions: For Research Use only

Handling

Format: Liquid

Concentration: 0.4 mg/mL

Buffer: PBS with 0.05 % sodium azide and 50 % glycerol, PH7.4

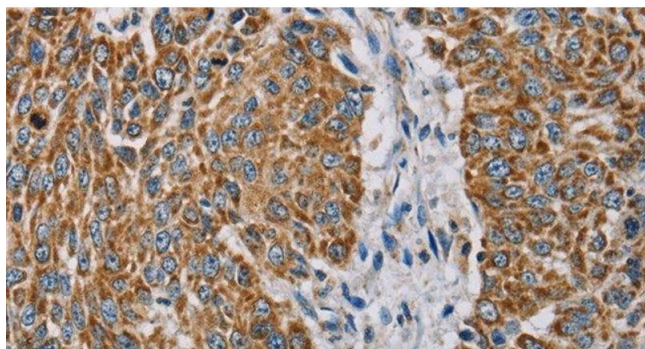
Preservative: Sodium azide

Precaution of Use: This product contains Sodium azide: a POISONOUS AND HAZARDOUS SUBSTANCE which should be handled by trained staff only.

Storage: -20 °C

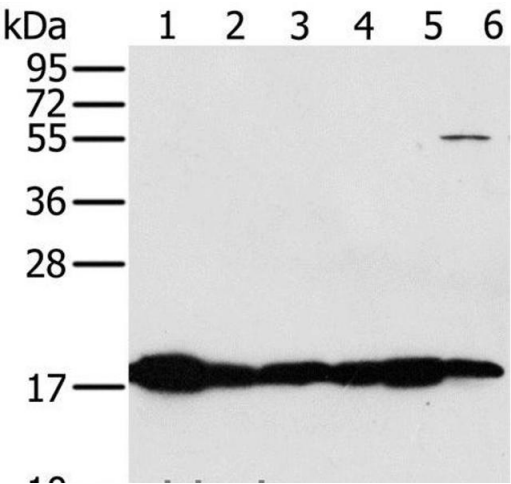
Storage Comment: Store at -20°C. Avoid freeze / thaw cycles.

Images



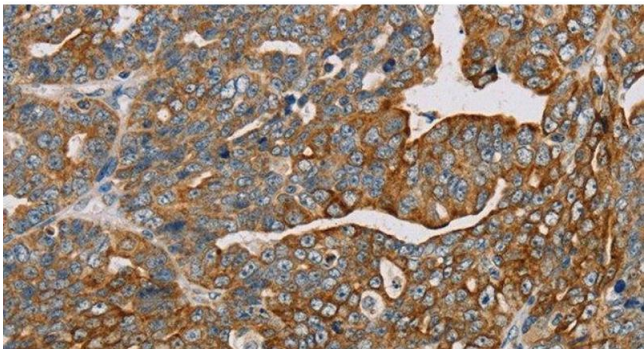
Immunohistochemistry (Paraffin-embedded Sections)

Image 1. Immunohistochemistry of paraffin-embedded Human lung cancer using MTFP1 Polyclonal Antibody at dilution of 1:30



Western Blotting

Image 2. Western Blot analysis of Mouse heart and muscle tissue, hela cell and Mouse liver tissue, Mouse kidney tissue and hepg2 cell using MTFP1 Polyclonal Antibody at dilution of 1:450



Immunohistochemistry (Paraffin-embedded Sections)

Image 3. Immunohistochemistry of paraffin-embedded Human cervical cancer using MTFP1 Polyclonal Antibody at dilution of 1:30