

Datasheet for ABIN7248977

**anti-NDUFA2 antibody****2** Images[Go to Product page](#)

## Overview

|              |  |
|--------------|--|
| Quantity:    | 200 µL   |
| Target:      | NDUFA2   |
| Reactivity:  | Human, Mouse   |
| Host:        | Rabbit   |
| Clonality:   | Polyclonal   |
| Conjugate:   | This NDUFA2 antibody is un-conjugated                    |
| Application: | ELISA, Western Blotting (WB), Immunohistochemistry (IHC) |

## Product Details

|                  |                                     |
|------------------|-------------------------------------|
| Immunogen:       | Recombinant protein of human NDUFA2 |
| Isotype:         | IgG                                 |
| Characteristics: | Polyclonal Antibody                 |
| Purification:    | Affinity purification               |

## Target Details

|                   |  |
|-------------------|--|
| Target:           | NDUFA2   |
| Alternative Name: | NDUFA2 ( <a href="#">NDUFA2 Products</a> )   |
| Background:       | The encoded protein is a subunit of the hydrophobic protein fraction of the NADH:ubiquinone oxidoreductase (complex 1), the first enzyme complex in the electron transport chain located in the inner mitochondrial membrane, and may be involved in regulating complex I activity or its assembly via assistance in redox processes. Mutations in this gene are associated with Leigh |

## Target Details

syndrome, an early-onset progressive neurodegenerative disorder.

Molecular Weight: 11 kDa

UniProt: [O43678](#)

## Application Details

Application Notes: WB 1:500-1:2000, IHC 1:25-1:100

Restrictions: For Research Use only

## Handling

Format: Liquid

Concentration: 0.4 mg/mL

Buffer: PBS with 0.05 % sodium azide and 50 % glycerol, PH7.4

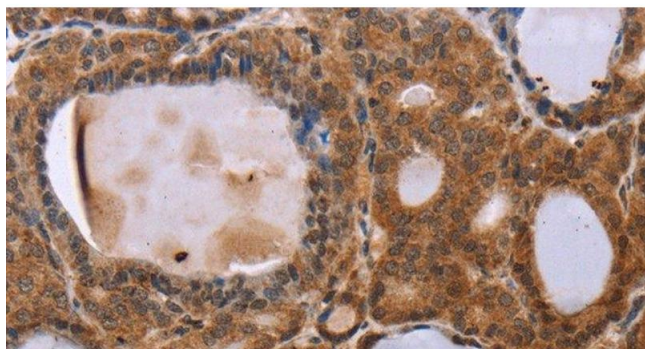
Preservative: Sodium azide

Precaution of Use: This product contains Sodium azide: a POISONOUS AND HAZARDOUS SUBSTANCE which should be handled by trained staff only.

Storage: -20 °C

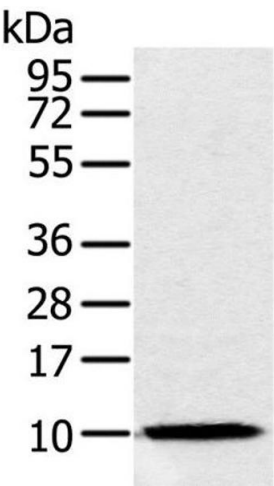
Storage Comment: Store at -20°C. Avoid freeze / thaw cycles.

## Images



### Immunohistochemistry (Paraffin-embedded Sections)

**Image 1.** Immunohistochemistry of paraffin-embedded Human thyroid cancer using NDUF2 Polyclonal Antibody at dilution of 1:30



Western Blotting

**Image 2.** Western Blot analysis of Raw264.7 cell using NDUFA2 Polyclonal Antibody at dilution of 1:300