



[Go to Product page](#)

Datasheet for ABIN7248992

anti-TERT antibody

2 Images

Overview

Quantity:	200 µL
Target:	TERT
Reactivity:	Human
Host:	Rabbit
Clonality:	Polyclonal
Conjugate:	This TERT antibody is un-conjugated
Application:	ELISA, Western Blotting (WB), Immunohistochemistry (IHC)

Product Details

Immunogen:	Synthetic peptide of human TERT
Isotype:	IgG
Characteristics:	Polyclonal Antibody
Purification:	Affinity purification

Target Details

Target:	TERT
Alternative Name:	TERT (TERT Products)
Background:	Telomerase is a ribonucleoprotein polymerase that maintains telomere ends by addition of the telomere repeat TTAGGG. The enzyme consists of a protein component with reverse transcriptase activity, encoded by this gene, and an RNA component which serves as a template for the telomere repeat. Telomerase expression plays a role in cellular senescence, as

Target Details

it is normally repressed in postnatal somatic cells resulting in progressive shortening of telomeres. Deregulation of telomerase expression in somatic cells may be involved in oncogenesis. Studies in mouse suggest that telomerase also participates in chromosomal repair, since de novo synthesis of telomere repeats may occur at double-stranded breaks. Alternatively spliced variants encoding different isoforms of telomerase reverse transcriptase have been identified, the full-length sequence of some variants has not been determined. Alternative splicing at this locus is thought to be one mechanism of regulation of telomerase activity.

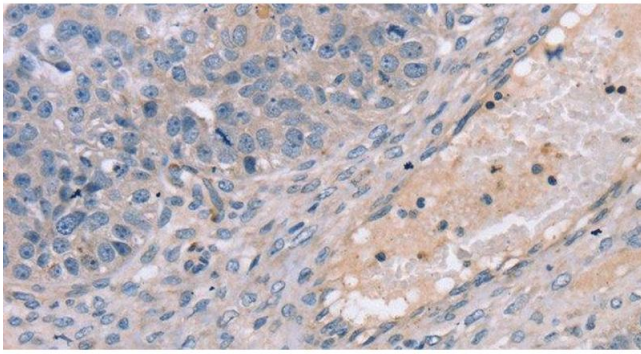
Molecular Weight:	127 kDa
NCBI Accession:	NP_937983
UniProt:	O14746
Pathways:	Telomere Maintenance

Application Details

Application Notes:	WB 1:200-1:1000, IHC 1:25-1:100
Restrictions:	For Research Use only

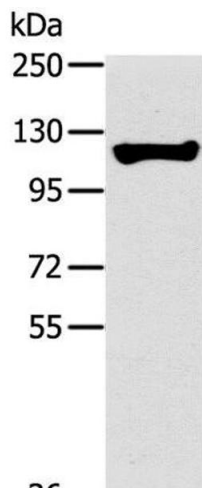
Handling

Format:	Liquid
Concentration:	1.1 mg/mL
Buffer:	PBS with 0.05 % sodium azide and 50 % glycerol, PH7.4
Preservative:	Sodium azide
Precaution of Use:	This product contains Sodium azide: a POISONOUS AND HAZARDOUS SUBSTANCE which should be handled by trained staff only.
Storage:	-20 °C
Storage Comment:	Store at -20°C. Avoid freeze / thaw cycles.



Immunohistochemistry (Paraffin-embedded Sections)

Image 1. Immunohistochemistry of paraffin-embedded Human breast cancer using TERT Polyclonal Antibody at dilution of 1:35



Western Blotting

Image 2. Western Blot analysis of Human fetal liver tissue using TERT Polyclonal Antibody at dilution of 1:200