

Datasheet for ABIN7248995

anti-LHB antibody[Go to Product page](#)**1** Image

Overview

Quantity:	200 µL
Target:	LHB
Reactivity:	Human
Host:	Rabbit
Clonality:	Polyclonal
Conjugate:	This LHB antibody is un-conjugated
Application:	Western Blotting (WB), ELISA

Product Details

Immunogen:	Synthetic peptide of human LHB
Isotype:	IgG
Characteristics:	Polyclonal Antibody
Purification:	Affinity purification

Target Details

Target:	LHB
Alternative Name:	LHB (LHB Products)
Background:	This gene is a member of the glycoprotein hormone beta chain family and encodes the beta subunit of luteinizing hormone (LH). Glycoprotein hormones are heterodimers consisting of a common alpha subunit and an unique beta subunit which confers biological specificity. LH is expressed in the pituitary gland and promotes spermatogenesis and ovulation by stimulating

Target Details

the testes and ovaries to synthesize steroids. The genes for the beta chains of chorionic gonadotropin and for luteinizing hormone are contiguous on chromosome 19q13.3. Mutations in this gene are associated with hypogonadism which is characterized by infertility and pseudohermaphroditism.

Molecular Weight: 15 kDa

NCBI Accession: [NP_000885](#)

UniProt: [P01229](#)

Pathways: [Metabolism of Steroid Hormones and Vitamin D](#), [Peptide Hormone Metabolism](#), [Hormone Activity](#), [C21-Steroid Hormone Metabolic Process](#)

Application Details

Application Notes: WB 1:500-1:2000

Restrictions: For Research Use only

Handling

Format: Liquid

Concentration: 0.5 mg/mL

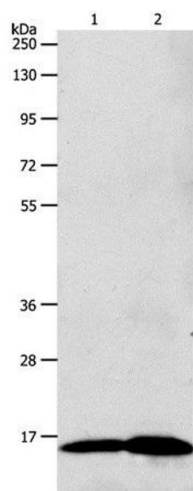
Buffer: PBS with 0.05 % sodium azide and 50 % glycerol, PH7.4

Preservative: Sodium azide

Precaution of Use: This product contains Sodium azide: a POISONOUS AND HAZARDOUS SUBSTANCE which should be handled by trained staff only.

Storage: -20 °C

Storage Comment: Store at -20°C. Avoid freeze / thaw cycles.



Western Blotting

Image 1. Western Blot analysis of 293T cell and Human fetal brain tissue using LHB Polyclonal Antibody at dilution of 1:800