

Datasheet for ABIN7249016
anti-Integrin beta 3 antibody

3 Images

[Go to Product page](#)

Overview

Quantity:	200 µL
Target:	Integrin beta 3 (ITGB3)
Reactivity:	Human, Mouse
Host:	Rabbit
Clonality:	Polyclonal
Conjugate:	This Integrin beta 3 antibody is un-conjugated
Application:	Western Blotting (WB), Immunohistochemistry (IHC), ELISA

Product Details

Immunogen:	Recombinant protein of human ITGB3
Isotype:	IgG
Characteristics:	Polyclonal Antibody
Purification:	Affinity purification

Target Details

Target:	Integrin beta 3 (ITGB3)
Alternative Name:	CD61 (ITGB3 Products)
Background:	The ITGB3 protein product is the integrin beta chain beta 3. Integrins are integral cell-surface proteins composed of an alpha chain and a beta chain. A given chain may combine with Human, Mouse multiple partners resulting in different integrins. Integrin beta 3 is found along with the alpha IIb chain in platelets. Integrins are known to participate in cell adhesion as well as cell-

Target Details

	surface mediated signalling.
Molecular Weight:	87 kDa
UniProt:	P05106
Pathways:	Regulation of G-Protein Coupled Receptor Protein Signaling , Signaling Events mediated by VEGFR1 and VEGFR2 , Smooth Muscle Cell Migration , Integrin Complex

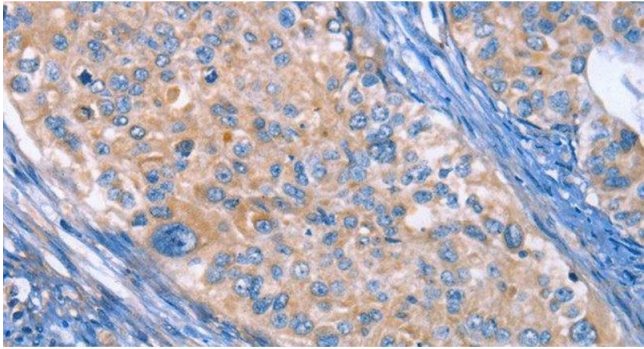
Application Details

Application Notes:	WB 1:500-1:2000, IHC 1:50-1:200
Restrictions:	For Research Use only

Handling

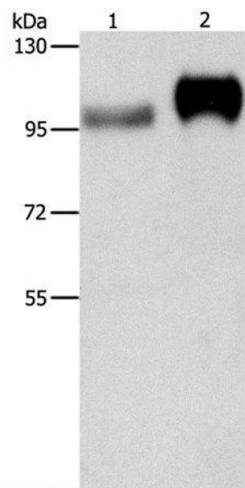
Format:	Liquid
Concentration:	0.2 mg/mL
Buffer:	PBS with 0.05 % sodium azide and 50 % glycerol, PH7.4
Preservative:	Sodium azide
Precaution of Use:	This product contains Sodium azide: a POISONOUS AND HAZARDOUS SUBSTANCE which should be handled by trained staff only.
Storage:	-20 °C
Storage Comment:	Store at -20°C. Avoid freeze / thaw cycles.

Images



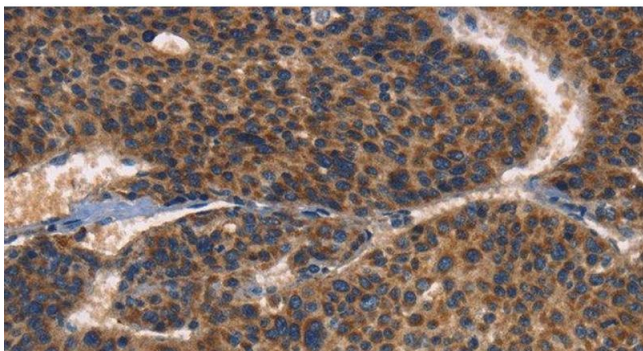
Immunohistochemistry (Paraffin-embedded Sections)

Image 1. Immunohistochemistry of paraffin-embedded Human cervical cancer using CD61 Polyclonal Antibody at dilution of 1:30



Western Blotting

Image 2. Western Blot analysis of Huvec cell and Human placenta tissue using CD61 Polyclonal Antibody at dilution of 1:500



Immunohistochemistry (Paraffin-embedded Sections)

Image 3. Immunohistochemistry of paraffin-embedded Human liver cancer using CD61 Polyclonal Antibody at dilution of 1:30